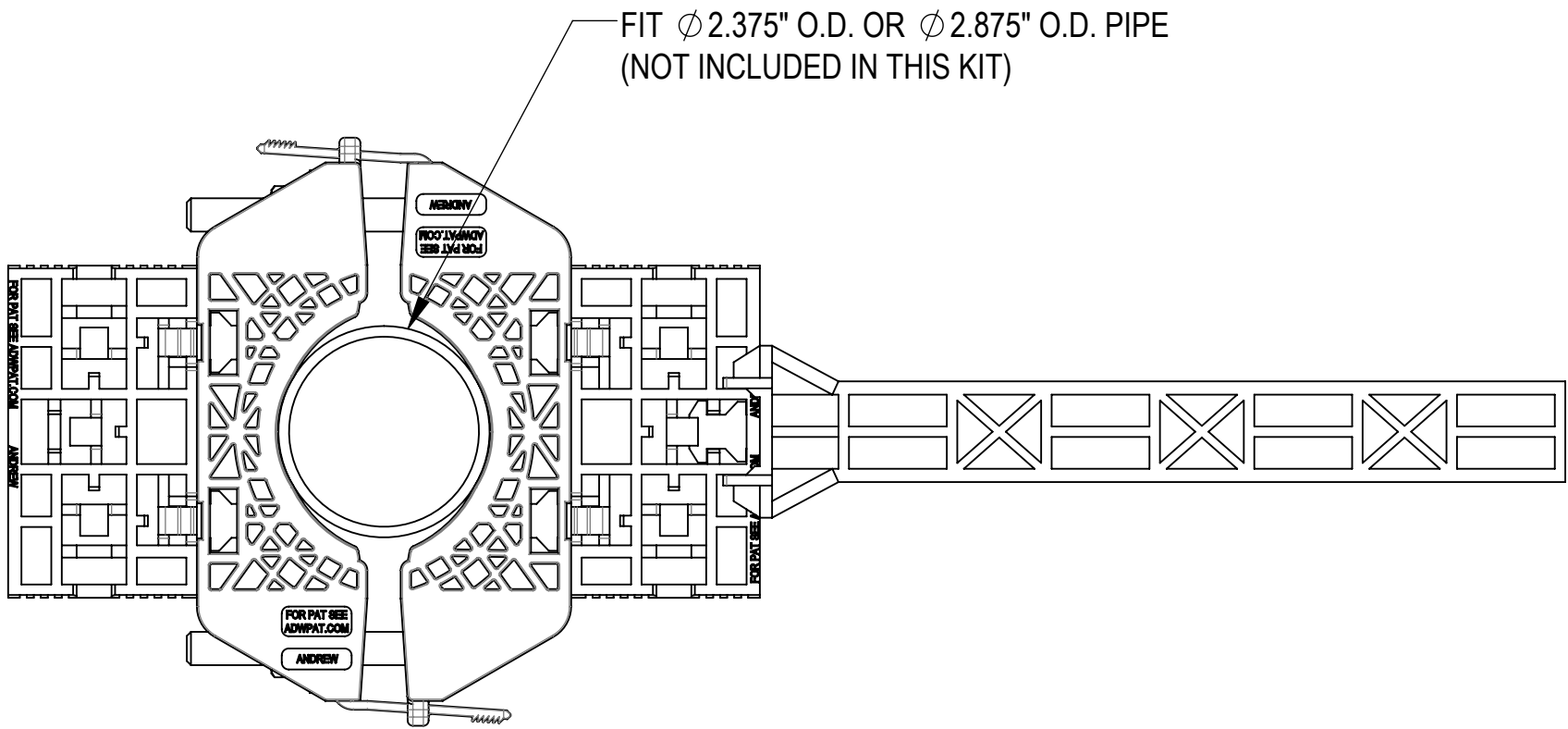


- 1.0 GENERAL NOTES
- 1.1 ALL METRIC DIMENSIONS ARE IN BRACKETS [X.X]
- 1.2 FEATURES CRITICAL TO QUALITY ARE INDICATED IN ROUNDED BOX (X.X)
- 2.0 DESIGN NOTES
- 3.0 MANUFACTURING/SPECIAL REQUIREMENTS
- 3.1 TIGHTEN ALL BOLTS SECURING FLAT PLATES BY THE TURN-OF-NUT METHOD.
- 4.0 TEST
- 5.0 PACKAGING
- 5.1 PACKAGING MUST BE AGREED TO IN WRITING BY ANDREW PRIOR TO MASS-PRODUCTION APPROVAL.
- 5.2 PARTS ARE TO BE PACKAGING IN A MANNER OT PREVENT DAMAGE DURING SHIPMENT & STORAGE.
- 5.3 PACKAGING TO ADHERE TO ALL ANDREW, LOCAL & FOREIGN (WHERE APPLICABLE) SHIPPING REQUIREMENTS.
- 5.4 PACKAGING & PARTS TO BE FREE OF ALL CONTAMINANTS INCLUDING PAPER FROM BOX, DIRT, DUST, OILS, MOLD RELEASE, DETERGENT AND ALL OTHER FOREIGN MATERIALS.

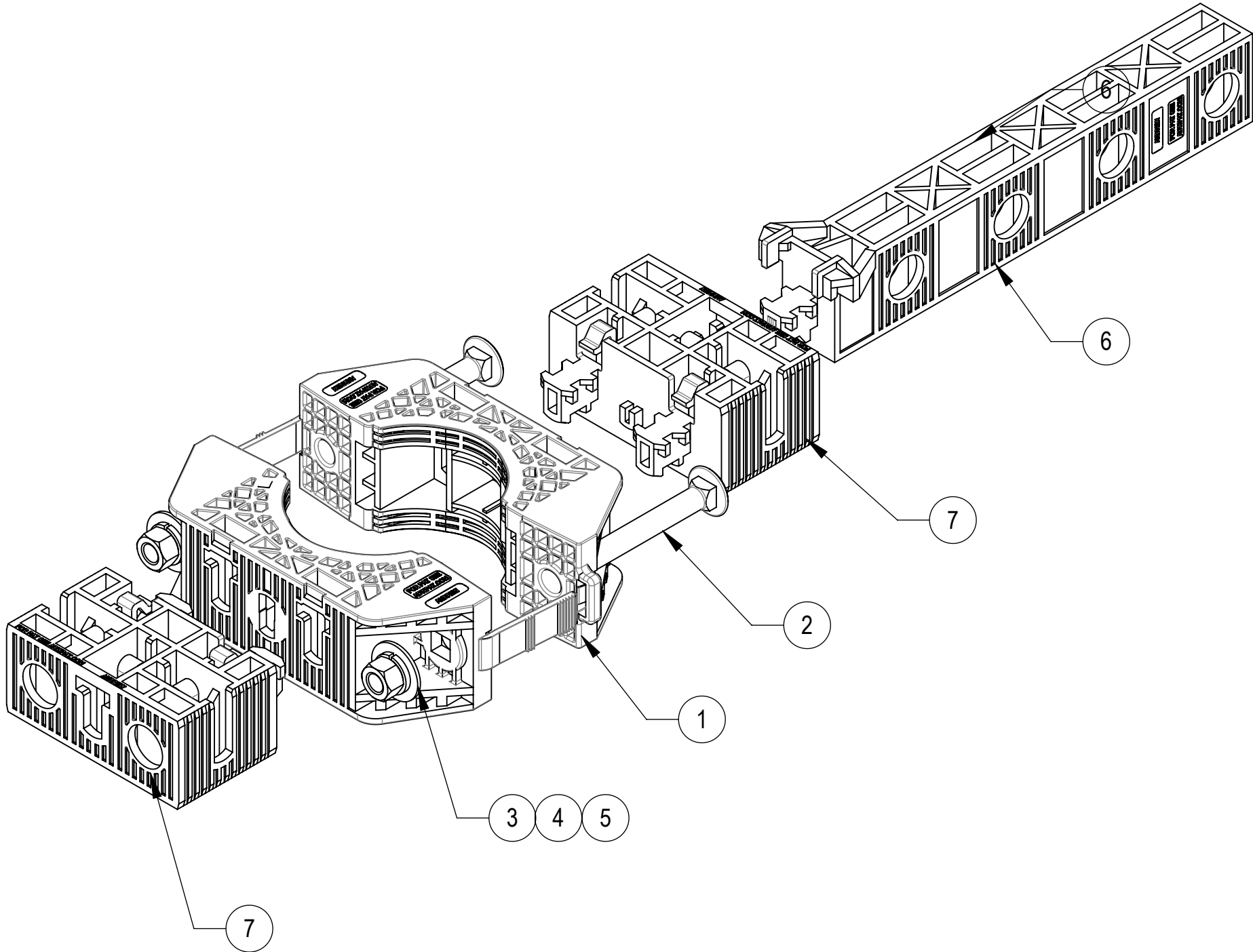


ASSEMBLY TOP VIEW


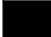



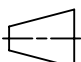
COMPONENT PART NUMBERS PROVIDED FOR ASSEMBLY PURPOSES;
INDIVIDUAL COMPONENTS MAY BE SHIPPED AS PARTS WITHIN AN INCLUDED KIT.

| ITEM NO. | PART NUMBER | DESCRIPTION | QTY. | WEIGHT |
|----------|-------------|---------------------------------|------|----------|
| 1 | PGCS-1000 | CLAMP,FRONT-REAR, POLYMER 4CP | 2 | 0.33 LBS |
| 2 | 9615-15 | BOLT,CARRIAGE,3/8-16,3,STL GALV | 2 | 0.12 LBS |
| 3 | GWF-03 | 3/8" GALV FLAT WASHER | 2 | 0.01 LBS |
| 4 | GWL-03 | 3/8" GALV LOCK WASHER | 2 | 0.01 LBS |
| 5 | GN-03 | 3/8" GALV HEX NUT | 2 | 0.02 LBS |
| 6 | PGCS-5000 | PANEL, HALF, POLYMER, 8CP | 1 | 0.30 LBS |
| 7 | PGCS-6000 | ADAPTER, POLYMER, 2CP | 2 | 0.21 LBS |

| REVISIONS | | | |
|-----------|-----------------------------------------------------------------------------------------------------------|----------------|--------------------|
| REV. | DESCRIPTION | DATE | APPROVED |
| A | INITIAL RELEASE | JL1183 02AUG24 | JX1030 40201665CMO |
| B | UPDATED VIEWS FOR PGCS-1000(ITEM 1), PGCS-5000(ITEM 6), PGCS-6000(ITEM 7) CHANGES; UPDATED TO ANDREW LOGE | JL1183 10JUN25 | JX1030 50103287AMO |



INSTALLATION ASSEMBLY

| | | | | | | | | | | | |
|-----------------------------------------------------------------------------------------------------------------------------------------------|---------------------------------------------------------------------------------------|---------------------------------------------------------------------------------------|---------------------------------------------------------------------------------------|-------------------------------------------------------|----------|---------------------|---------|--------|----------|-----------------|--|
| <div>ANDREW[®] an Amphenol company</div> | | | | | | | | | | | |
| TOLERANCES | | | | | | SAP MATERIAL MASTER | | | | | |
| 1 PLACE .X[X] ± 0.2[6.3] | | | 3 PLACE .XXX[X] ± 0.060[1.5] | | | PGP-CS10-R | | | | | |
| 2 PLACE .XX[X] ± 0.12[3.0] | | | ANGLES ± 2° | | | | | | | | |
| FINISH | | | | | MATERIAL | | | | | | |
| UNLESS OTHERWISE SPECIFIED DIMENSIONS ARE IN INCHES INTERPRET PER ANSI Y 14.5M-1994 | | NAME | DATE | PG PREMIUM,CBL-SUPPORT,10-HOLE | | | | | | | |
| | CE | JL1183 | 02AUG24 | | | | | | | | |
| | RW | JL1183 | 06/11/2025 | | | | | | | | |
| |  |  |  | SCALE 1:3 DOCUMENT NO. PGP-CS10-R | | | | | | | |
| | AD | JX1030 | 06/11/2025 | | | | | | | | |
| | RE | JL1183 | 06/11/2025 | | | | | | | | |
| | ECN 50103287AMO | | | | | | | | | | |
| SIZE | | Auth Group | INSL | MODEL | | | DRAWING | | | SHEET 1 OF 1 | |
| C | |  |  | VERSION | STATUS | REVISION | VERSION | STATUS | REVISION | | |
| | | | | 01 | RE | B | 01 | RE | B | | |

| | | |
|--------------|--------|---------|
| DENSITY | | lbs/in³ |
| MASS | 1.47 | lbs |
| VOLUME | 34.99 | in³ |
| SURFACE AREA | 582.66 | in² |
| HEIGHT | 6.6" | |
| LENGTH | 17.5" | |
| WIDTH | 2.0" | |

Confidential