

4

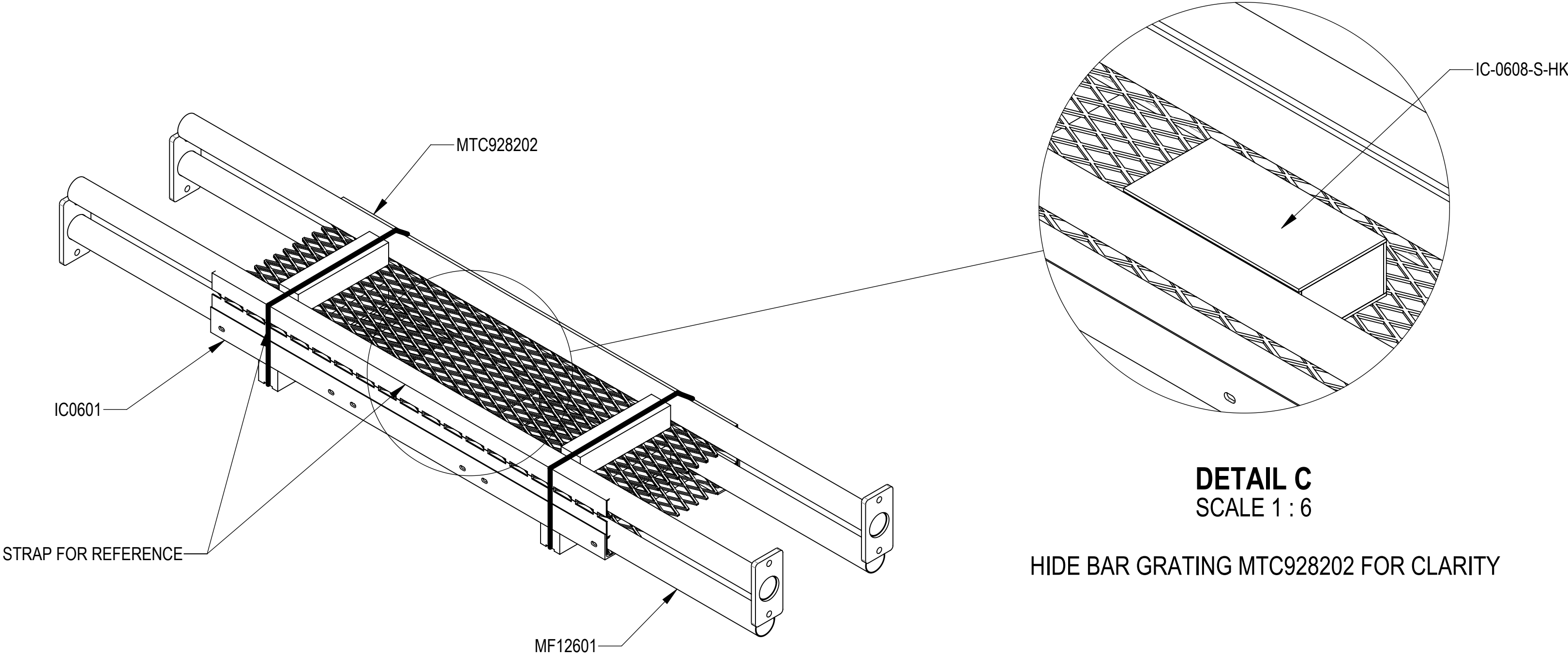
3

2





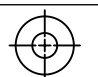
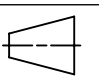
1

- 1.0 GENERAL NOTES
- 1.1 ALL METRIC DIMENSIONS ARE IN BRACKETS [X. X]
- 1.2 FOR PATENT INFO: <https://www.adwpat.com>
- 2.0 DESIGN NOTES
- 2.1 ANY HAZARDS OR OBSTRUCTIONS TO THE CLIMBING FACILITY AND SAFETY CLIMB MUST BE IDENTIFIED PRIOR TO INSTALLING THE APPURTENANCE. ADDITIONAL PRODUCTS MAY BE REQUIRED TO MAINTAIN THE INTEGRITY OF THE SAFETY CLIMB. DURING INSTALLATION, TEMPORARY AND/OR PERMANENT PRECAUTIONARY MEASURES SHOULD BE TAKEN TO PRESERVE THE CLIMBING FACILITY AND/OR SAFETY CLIMB.
- 3.0 MANUFACTURING/SPECIAL REQUIREMENTS
- 3.1 TIGHTEN ALL BOLTS SECURING FLAT PLATES BY THE TURN-OF-NUT METHOD. TIGHTEN ALL U-BOLTS USING TURN-OF-NUT METHOD WITH ATTENTION TO LEAVE EQUAL DISTANCE AND EQUAL FORCE ON EACH LEG OF THE U-BOLT.
- 4.0 TEST
- 5.0 PACKAGING
- 5.1 PACKAGING SHALL MEET ANDREW REQUIREMENTS PER DOCUMENT IS-PL-3005
- 5.2 PRINTED DOCUMENT TO BE PLACED INSIDE POLYBAG AND THEN IN SHIPPING CONTAINER
- 5.3 EXTRA HARDWARE MAY BE SUPPLIED, BAGGED AND SHIPPED

REVISIONS			
REV.	DESCRIPTION	DATE	APPROVED
A	INITIAL RELEASE	LL1090 13SEP24	YW1047 40204447CMO
B	UPDATED DRAWING DESCRIPTION; IPDATED DRAWING FORMAT	YX1027 24JUN25	YW1047 50103561AMO



PACKAGE VIEW

<div>ANDREW® an Amphenol company</div>																	
TOLERANCES						SAP MATERIAL MASTER											
1 PLACE .X[X] ± 0.2[6.3]			3 PLACE .XXX[X] ± 0.060[1.5]			IC-0606-S											
2 PLACE .XX[X] ± 0.12[3.0]			ANGLES ± 2°														
FINISH					MATERIAL												
UNLESS OTHERWISE SPECIFIED DIMENSIONS ARE IN INCHES INTERPRET PER ANSI Y 14.5M-1994		NAME	DATE	TITLE 06'X06' ICE CANOPY 10'-6" BASE SHOE													
	CE	LL1090	13SEP24														
	RW	YX1027	06/23/2025														
																	
	AD	YW1047	06/24/2025														
	RE	YMENG	06/24/2025														
	ECN 50103561AMO																
	SCALE 1:16		DOCUMENT NO. IC-0606-S														
SIZE		Auth Group		INSL		MODEL		DRAWING			SHEET 1 OF 2						
C						VERSION		STATUS		REVISION							
						00		RE		A		01		RE		B	

Confidential

4

3

2

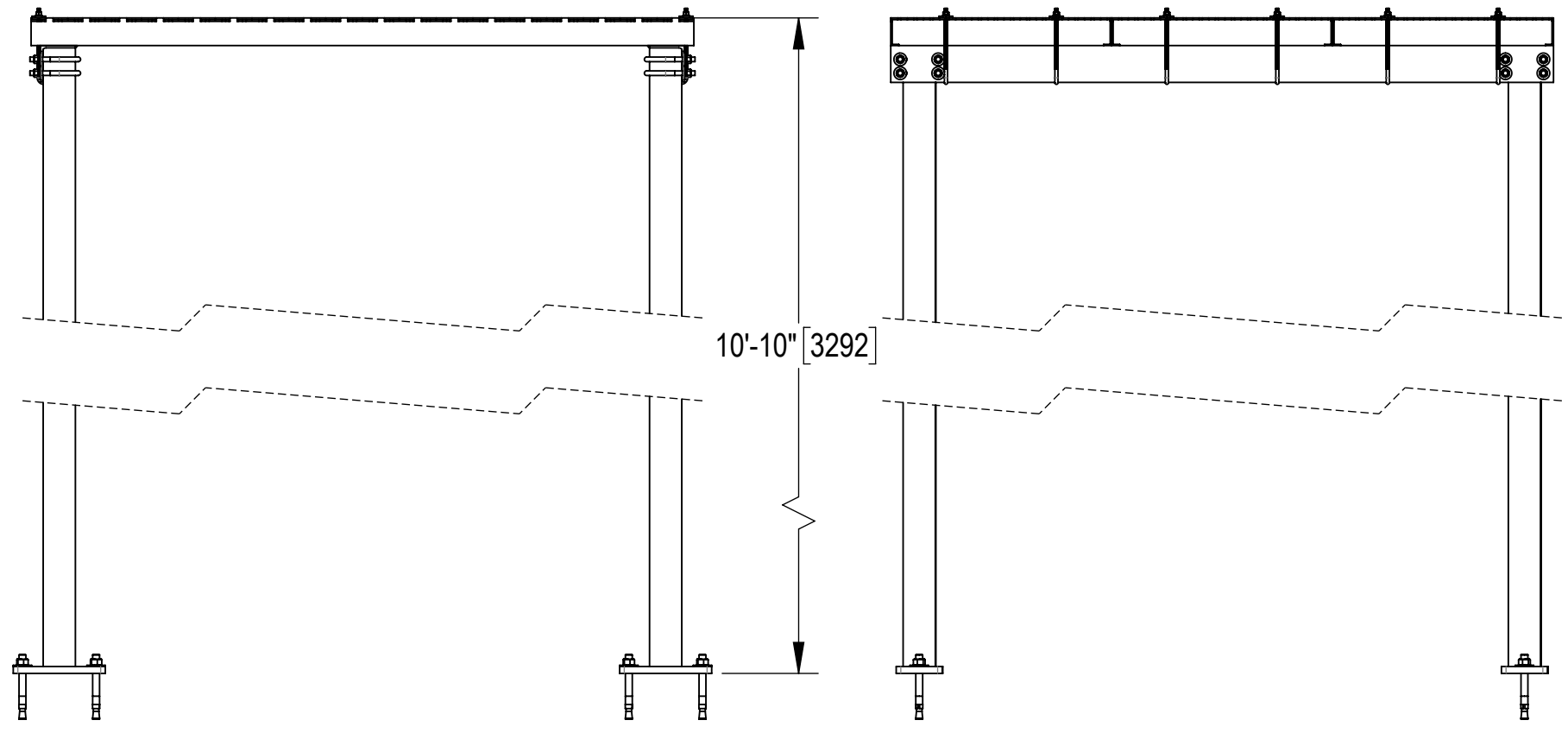
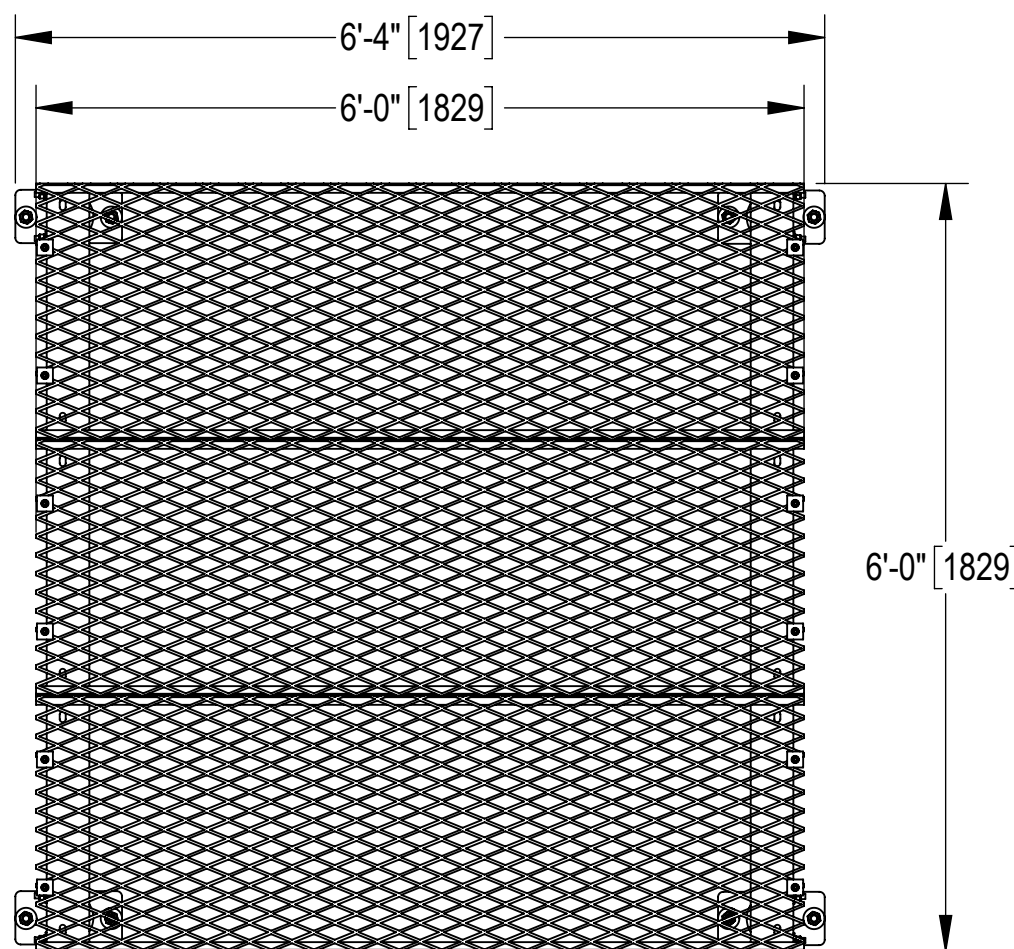
1

D

C

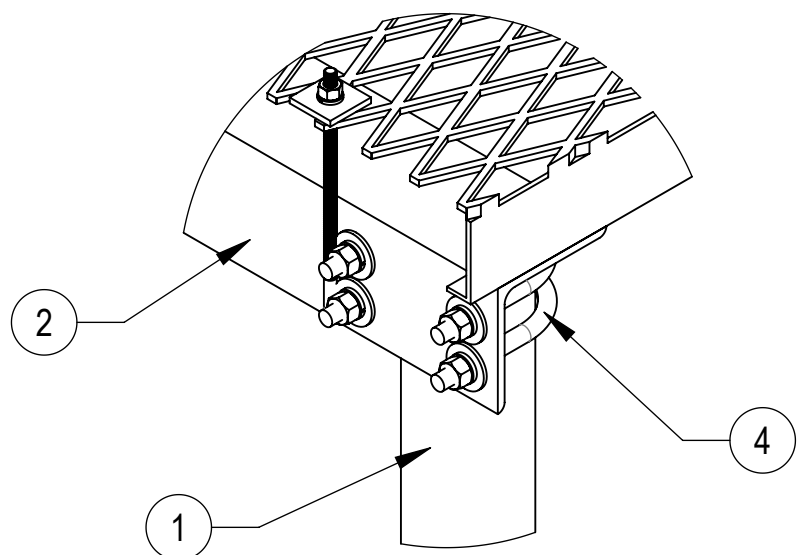
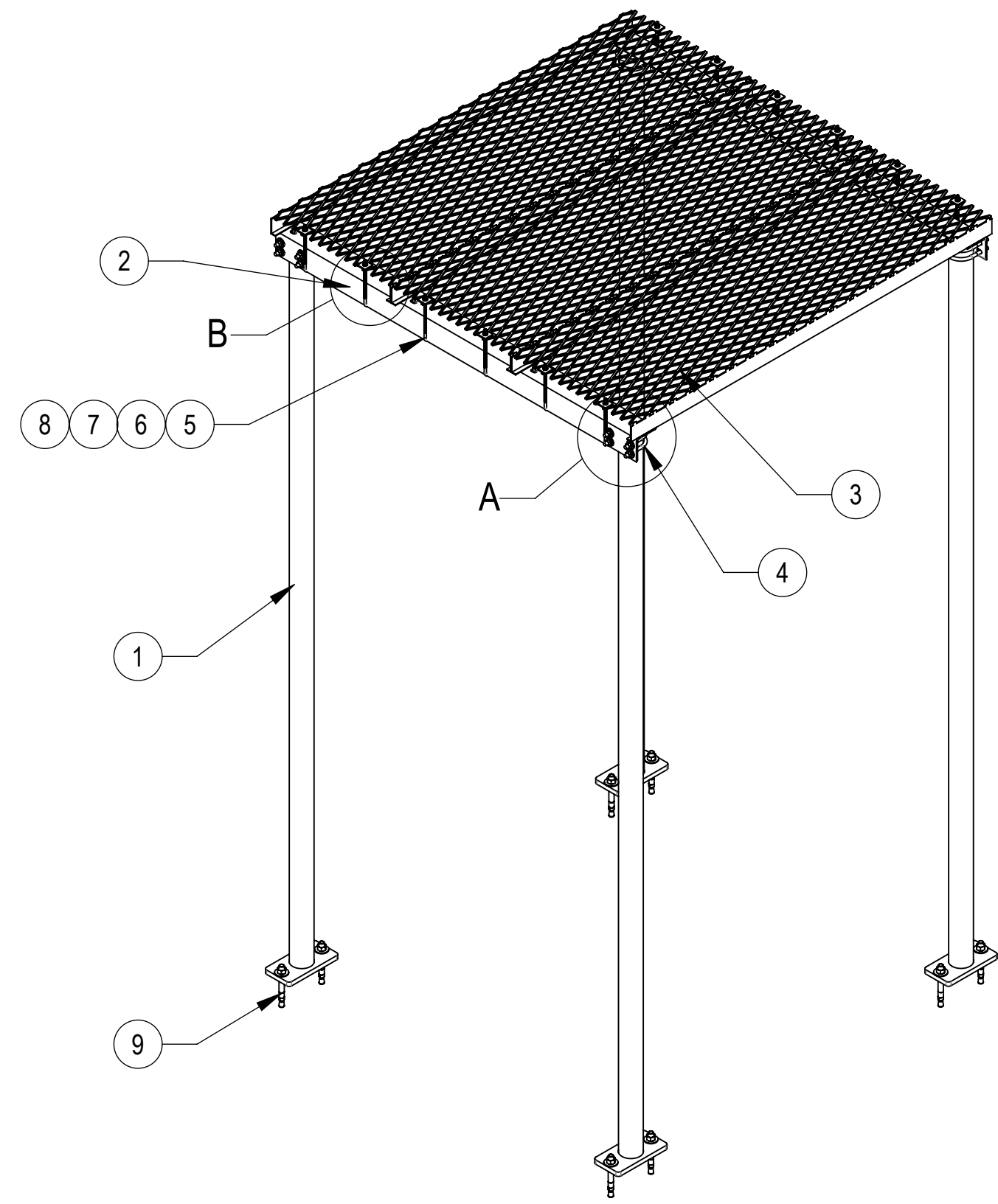
B

A

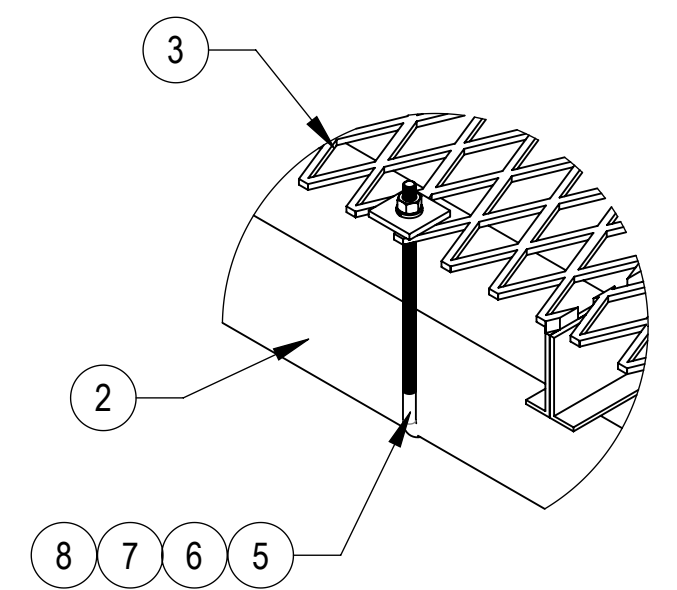


COMPONENT PART NUMBERS PROVIDED FOR ASSEMBLY PURPOSES;
INDIVIDUAL COMPONENTS MAY BE SHIPPED AS PARTS WITHIN AN INCLUDED KIT.

ITEM NO.	PART NUMBER	DESCRIPTION	QTY.	WEIGHT	NOTE NO.
1	MF12601	BASE SHOE WELDMENT, 10' 6"	4	53.81 LBS	
2	IC0601	6' ICE SHIELD SUPPORT BRACKET	2	51.95 LBS	
3	MTC928202	SAFETY GRATING 24" X 6'	3	48.23 LBS	
4	GUB-4355	1/2" X 3-5/8" X 5" GALV U-BOLT	8	0.71 LBS	
5	GJB0380	8" GALV J-BOLT KIT	12	0.23 LBS	
6	MT-387	SQUARE WASHER 1-1/2"X1-1/2" W/ 7/16 HOLE	12	0.11 LBS	
7	GWL-03	3/8" GALV LOCK WASHER	12	0.01 LBS	
8	GN-03	3/8" GALV HEX NUT	12	0.02 LBS	
9	MT-287	3/4" ANCHOR BOLT	8	1.08 LBS	


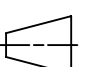


DETAIL A
SCALE 1 : 5



DETAIL B
SCALE 1 : 5



TITLE 06'X06' ICE CANOPY 10'-6" BASE SHOE				
SIZE C	SCALE 1:32	DOCUMENT NO. IC-0606-S		
 		DRAWING		
		VERSION 01	STATUS RE	REVISION B
SHEET 2 OF 2				

Confidential

D

C

B

A