



Installation Instruction for CMAX-HM4-60X1-I53 Antenna



CMAX-HM4-60X1-I53

Document Number: **M0153AH**
Document Revision: **01**

Date: **July 2025**

Copyright © 2025 ANDREW[®], an Amphenol company. All Rights Reserved.

This document has been developed by ANDREW, an Amphenol company, and is intended for the use of its customers and customer support personnel. The specifications and information regarding the products in this manual are subject to change without notice. All statements, information, and recommendations in this manual are believed to be accurate but are presented without warranty of any kind, express or implied. Users must take full responsibility for their application of any products.

The software license and limited warranty for the accompanying product are set forth in the information packet that shipped with the product and are incorporated herein by reference. If you are unable to locate the software license or limited warranty, contact your ANDREW sales representative for a copy.

Andrew Wireless Systems GmbH, 16-July-2025

TABLE OF CONTENTS

1. INSTALLATION	4
1.1. IMPORTANT INSTALLATION INFORMATION	4
1.2. PREPARATIONS AND MOUNTING DIRECTION	4
1.3. INSTALLATION PROCEDURE	5
1.3.1. Step 1: Drill the mounting holes	5
1.3.2. Step 2: Install the expansion bolts	5
1.3.3. Step 3: Install the antenna	5
2. CONTACTING ANDREW	6
2.1. TECHNICAL SUPPORT	6
2.2. WASTE ELECTRICAL AND ELECTRONIC EQUIPMENT RECYCLING	6
2.3. TECHNICAL TRAINING	7
2.4. ACCESSING USER DOCUMENTATION	7

LIST OF CHANGES

Version	Changes	Release Date
M0153AHA		13-August-2024
M0153AHB	Branding and contact information updated	16-July-2025

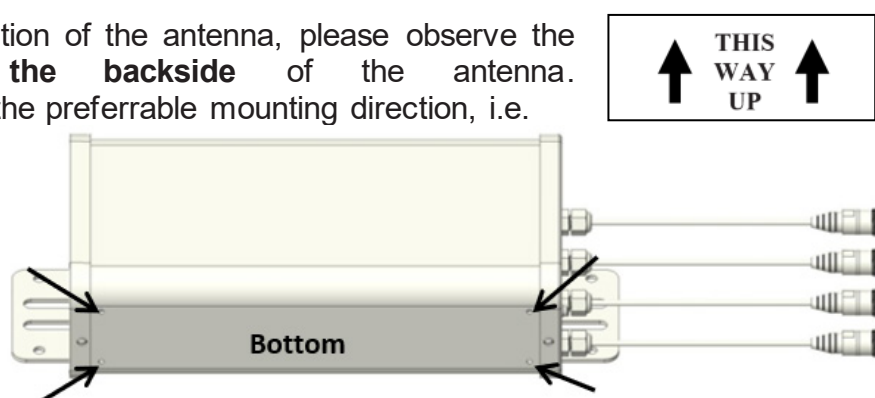
1. Installation

1.1. Important Installation Information

- Please read the complete description before starting the installation.
- Observe that the cable has a max. bending radius of 40 mm.
- Be sure that connectors are properly sealed from water if no cables are connected to them after installation.

1.2. Preparations and Mounting Direction

For the mounting direction of the antenna, please observe the **arrow label on the backside** of the antenna. These arrows indicate the preferable mounting direction, i.e. with the **bottom facing the ground** (as shown on the right); otherwise, water may seep into the antenna and damage it.

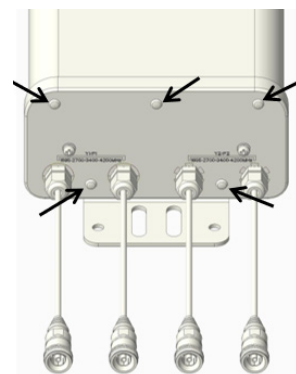


The antenna also has drainage holes that serve to drain the water from inside the antenna (e.g. due to condensation caused by high temperature differences).

For shipping, the drainage holes are covered by plastic rivets. The rivets of the holes facing downwards **must be removed for outdoor use** (i.e. environments where high temperature differences can be expected). For their removal, a knife or a flat screwdriver can be used. The arrows in the figure above show their locations at the bottom. These must be removed if the antenna is installed as intended (preferred mounting direction) with the bottom facing the ground.

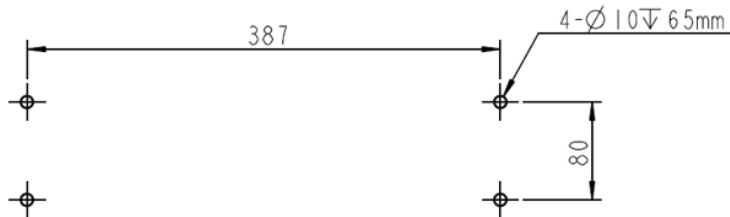
The end cover of the antenna outlet connector also has drain holes covered by rivets (shown on the right). **Do not remove** these rivets if the antenna is **installed as shown above** (with the actual bottom side facing downwards). Otherwise, water may seep into the antenna and damage it.

Note: However, if the antenna is installed (unlike intended) with the outlet connector facing downwards, these rivets (indicated to the right) must be removed, and the bottom side rivets (see above) must not be removed.



1.3. Installation Procedure

1.3.1. Step 1: Drill the mounting holes



As shown on the left, drill four Ø10mm holes in the wall, each with a depth of 65 mm.

1.3.2. Step 2: Install the expansion bolts


Put four M6*80 expansion bolts (not part of the delivery) into the drilled holes in the wall as shown in the picture.

Notice: Make sure to use expansion bolts that are rated for the mounting surface (wall structure and materials) and are, thus, suitable for the on-site conditions.

1.3.3. Step 3: Install the antenna



As shown, connect the antenna to the wall through the expansion bolts, lock the nut of the M6*80 expansion bolts, and complete the antenna installation.

Installation tool	Reference torque	
	Nut	Torque
 10 mm dual-purpose wrench (to be prepared by customer)	M6	8 Nm

2. Contacting ANDREW

The following sections tell you how to contact ANDREW® for additional information or for assistance.

2.1. Technical Support

The following sections tell you how to contact the ANDREW Technical Support team. Support is available 7 days a week, 24 hours a day.

Telephone Helplines

Use the following Helpline telephone numbers to get live support, 24 hours a day.

24X7 +1 888-297-6433 (Toll free for U.S. and Canada)

EMEA 8:00-17:00 (UTC +1) + 800 73732837 (Toll free for parts of EMEA and Australia)
+ 49 909969333 (Toll charge incurred)

Calls to an EMEA Helpline outside of the 8:00 to 17:00 time frame will be forwarded to the 24x7 Helpline.

Online Support

Click the link below or scan the QR code to the right to submit tickets using the online [Technical Support Form](#).



2.2. Waste Electrical and Electronic Equipment Recycling

The ANDREW focus on building a sustainable future includes protecting and preserving the environment. The challenges our planet now faces — including climate change, resource depletion and pollution — require urgent attention and innovative solutions.

We believe that sustainable practices are key to addressing these challenges and ensuring a healthier environment for future generations. Through responsible actions, eco-friendly initiatives and cutting-edge technologies, ANDREW is empowering businesses and communities to reduce their environmental impact. Join us in making a meaningful difference.

To learn more, scan the QR code to the right or click the link below:

<https://www.andrew.com/sustainability/environment/weee/>



2.3. Technical Training

1. To access training on the online technical training site, please click <https://www.andrew.com/support/training/> or scan the QR code to the right:
2. From here you can see course catalogs, training calendars, and visit the training portal that lets you register for online and instructor-led courses and take online courses.
3. Instructor-led courses are conducted in North America and Europe. Before choosing a course, please verify the region.
4. For training related questions, please contact us:
icn_training@andrew.com



2.4. Accessing User Documentation

1. Access to the Customer Portal requires a user account. If you don't have an account:
 - Visit My ANDREW at <https://www.andrew.com/membership> or by scanning the QR code to the right.
 - Click “New user registration” and follow the prompts.
 - After you have registered in My ANDREW, click the **Request access** button for the **Customer Portals**.
 - After having done the request, it might take several days to get approved. Then, you can select the **Indoor Wireless Resource Center for ANDREW** from the list of applications.
2. To go directly to the portal, where you can access the DAS-user documentation, scan the QR Code to the right.
Alternatively, visit My ANDREW (see above) and use the **Indoor Wireless Resource Center for ANDREW** application.
3. In Tools and Documentation, search by product, document category, or title.
4. Click on the title of any document to open it.

