



CMAX-D-43-UW-I53/ CMAX-D-TCPUSEI53 Antennas



**CMAX-D-43-UW-I53
CMAX-D-TCPUSEI53**

Document Number: M0149AR
Document Revision: 02

Date: July 2025

Copyright © 2025 ANDREW®, an Amphenol company. All Rights Reserved.

This document has been developed by ANDREW, an Amphenol company, and is intended for the use of its customers and customer support personnel. The specifications and information regarding the products in this manual are subject to change without notice. All statements, information, and recommendations in this manual are believed to be accurate but are presented without warranty of any kind, express or implied. Users must take full responsibility for their application of any products.

The software license and limited warranty for the accompanying product are set forth in the information packet that shipped with the product and are incorporated herein by reference. If you are unable to locate the software license or limited warranty, contact your ANDREW sales representative for a copy.

Andrew Wireless Systems GmbH, 23-July-2025

TABLE OF CONTENTS

1. INSTALLATION	4
1.1. IMPORTANT INSTALLATION INFORMATION	4
1.2. ASSEMBLY	4
1.3. WALL MOUNTING	5
1.4. POLE MOUNTING	5
1.5. ANTENNA MOUNTING	6
1.6. AZIMUTH ANGLE	6
1.7. ELEVATION ANGLE	6
2. CONTACTING ANDREW	7
2.1. TECHNICAL SUPPORT	7
2.2. WASTE ELECTRICAL AND ELECTRONIC EQUIPMENT RECYCLING	7
2.3. TECHNICAL TRAINING	8
2.4. ACCESSING USER DOCUMENTATION	8

LIST OF CHANGES

Version	Changes	Release Date
M0149ARB		04-May-2020
M0149ARC	Branding and contact information updated Discontinued antenna type deleted	23-July-2025

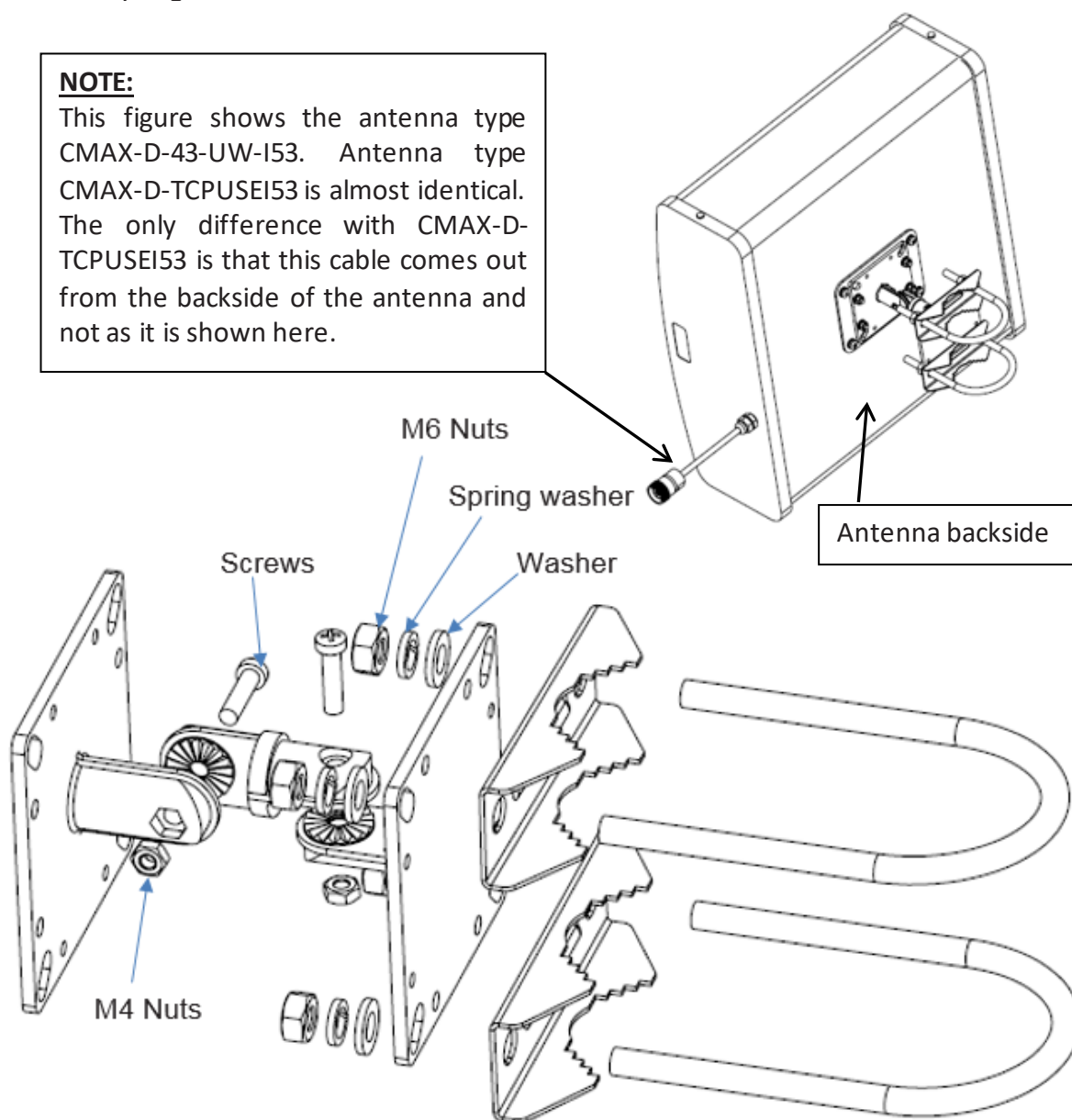
1. Installation

1.1. Important Installation Information

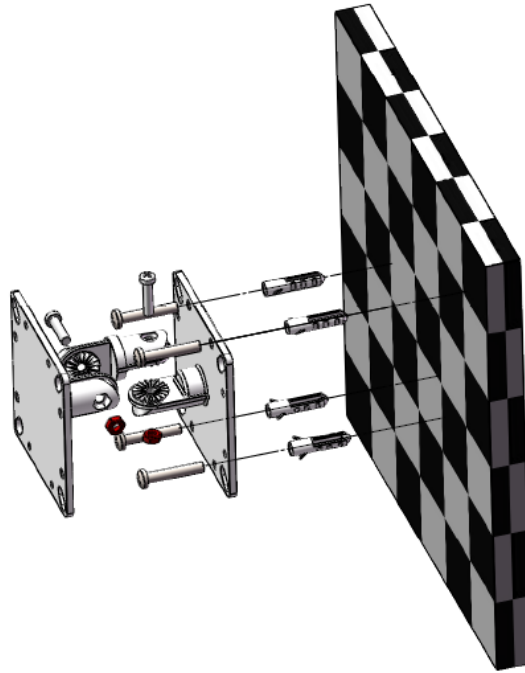
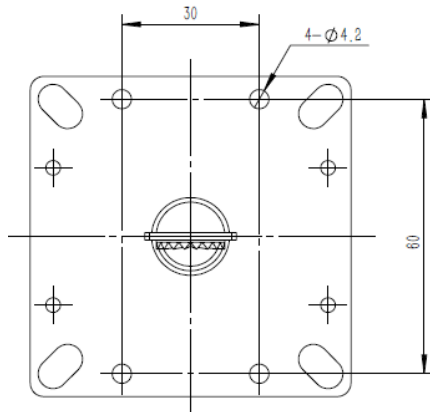
- o Please read the complete description before starting the installation.
- o Be sure that connectors are properly sealed from water if no cables are connected to them after installation.

1.2. Assembly

Fit the seven parts shown below together and fasten them with screws M4, M6, nuts M4, M6, spring washers, and washers:



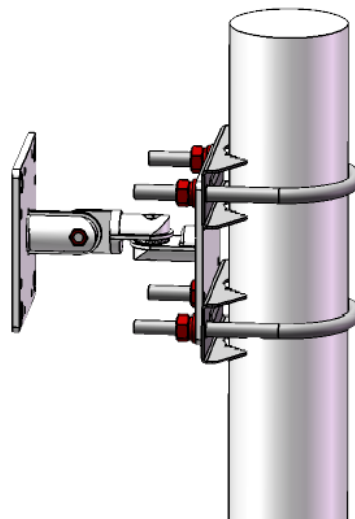
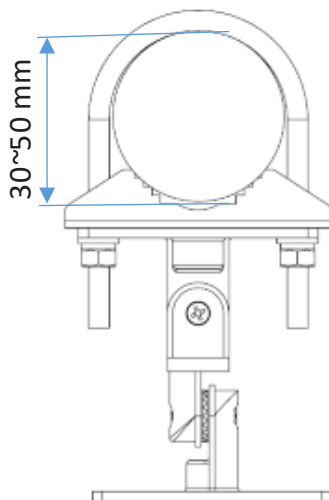
1.3. Wall Mounting



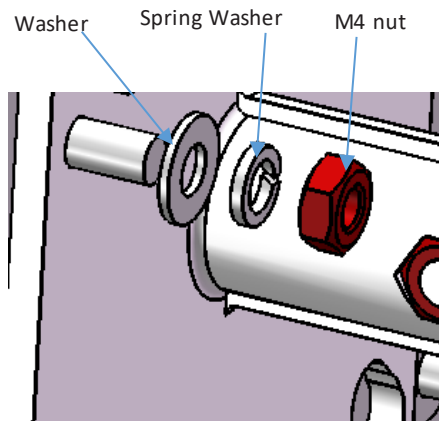
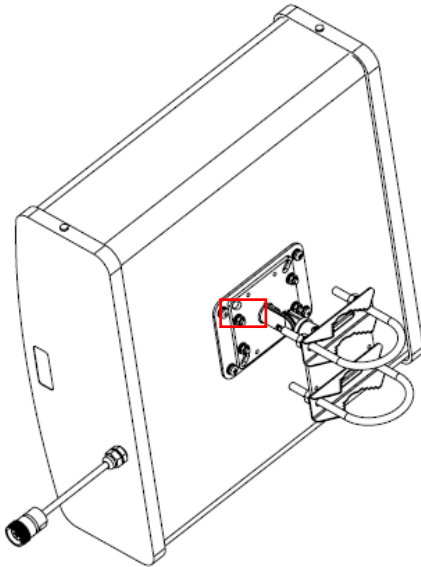
1. Use this pedestal piece as a drill jig to mark 4 holes onto the wall as shown in the drawing above.
2. Drill 4 holes into the wall and insert plastic plug into holes.
3. Attach the complete bracket with tapping screw ST4.2X25mm and plastic plug $\varnothing 6 \times 25$ mm.

Note: Cable min. bending radius: 40mm

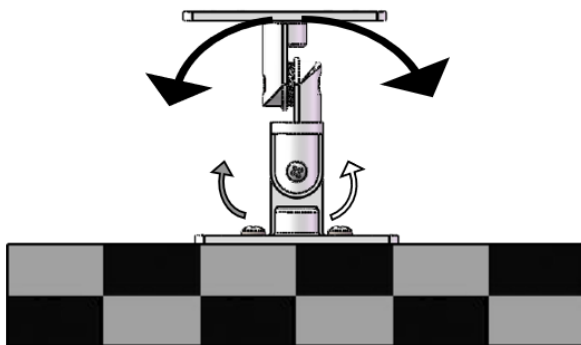
1.4. Pole Mounting



1.5. Antenna Mounting



1.6. Azimuth Angle



1. Loosen the fixing screw.
(Do NOT unscrew it completely.)



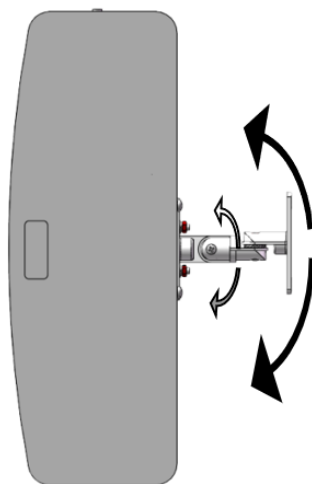
2. Adjust your desired angle.
The complete antenna pedestal can be swiveled to the left- / right-hand side by up to 25°.



3. Tighten the fixing screw.



1.7. Elevation Angle



1. Loosen the fixing screw.
(Do NOT unscrew it completely.)



2. Adjust your desired angle.
The complete antenna pedestal can be swiveled to the top / bottom by up to 25°.



3. Fasten the fixing screw.



2. Contacting ANDREW

The following sections tell you how to contact ANDREW® for additional information or for assistance.

2.1. Technical Support

The following sections tell you how to contact the ANDREW Technical Support team. Support is available 7 days a week, 24 hours a day.

Telephone Helplines

Use the following Helpline telephone numbers to get live support, 24 hours a day.

24X7 +1 888-297-6433 (Toll free for U.S. and Canada)

EMEA 8:00-17:00 (UTC +1) + 800 73732837 (Toll free for parts of EMEA and Australia)
+ 49 909969333 (Toll charge incurred)

Calls to an EMEA Helpline outside of the 8:00 to 17:00 time frame will be forwarded to the 24x7 Helpline.

Online Support

Click the link below or scan the QR code to the right to submit tickets using the online [Technical Support Form](#).



2.2. Waste Electrical and Electronic Equipment Recycling

The ANDREW focus on building a sustainable future includes protecting and preserving the environment. The challenges our planet now faces — including climate change, resource depletion and pollution — require urgent attention and innovative solutions.

We believe that sustainable practices are key to addressing these challenges and ensuring a healthier environment for future generations. Through responsible actions, eco-friendly initiatives and cutting-edge technologies, ANDREW is empowering businesses and communities to reduce their environmental impact. Join us in making a meaningful difference.

To learn more, scan the QR code to the right or click the link below:

<https://www.andrew.com/sustainability/environment/weee/>



2.3. Technical Training

1. To access training on the online technical training site, please click <https://www.andrew.com/support/training/> or scan the QR code to the right:
2. From here you can see course catalogs, training calendars, and visit the training portal that lets you register for online and instructor-led courses and take online courses.
3. Instructor-led courses are conducted in North America and Europe. Before choosing a course, please verify the region.
4. For training related questions, please contact us:
icn_training@andrew.com



2.4. Accessing User Documentation

1. Access to the Customer Portal requires a user account. If you don't have an account:
 - Visit My ANDREW at <https://www.andrew.com/membership> or by scanning the QR code to the right.
 - Click “New user registration” and follow the prompts.
 - After you have registered in My ANDREW, click the **Request access** button for the **Customer Portals**.
 - After having done the request, it might take several days to get approved. Then, you can select the **Indoor Wireless Resource Center for ANDREW** from the list of applications.
2. To go directly to the portal, where you can access the DAS-user documentation, scan the QR Code to the right.
Alternatively, visit My ANDREW (see above) and use the **Indoor Wireless Resource Center for ANDREW** application.
3. In Tools and Documentation, search by product, document category, or title.
4. Click on the title of any document to open it.

