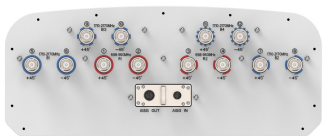


RRH4-65A-R6VBU



12-port sector antenna, 4x 698–960 and 8x 1710–2170 MHz, 65°HPBW, 6x RET

General Specifications

Antenna Type	Sector
Band	Multiband
Color	Light Gray (RAL 7035)
Grounding Type	RF connector inner conductor and body grounded to reflector and mounting bracket
Performance Note	Outdoor usage
Radome Material	Fiberglass, UV resistant
Radiator Material	Aluminum Low loss circuit board
Reflector Material	Aluminum
RF Connector Interface	4.3-10 Female
RF Connector Location	Bottom
RF Connector Quantity, mid band	8
RF Connector Quantity, low band	4
RF Connector Quantity, total	12

Remote Electrical Tilt (RET) Information

RET Hardware	CommRET v2
RET Interface	8-pin DIN Female 8-pin DIN Male
RET Interface, quantity	1 female 1 male
Input Voltage	10–30 Vdc
Internal RET	Low band (2) Mid band (4)
Power Consumption, active state, maximum	10 W
Power Consumption, idle state, maximum	2 W
Protocol	3GPP/AISG 2.0 (Single RET)

Dimensions

Width	498 mm 19.606 in
Depth	197 mm 7.756 in

RRH4-65A-R6VBU

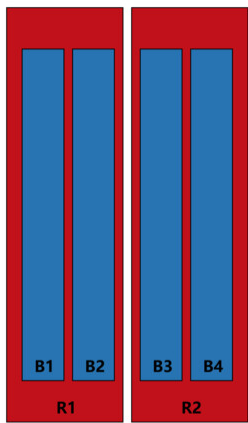
Length

1500 mm | 59.055 in

Net Weight, antenna only

27 kg | 59.525 lb

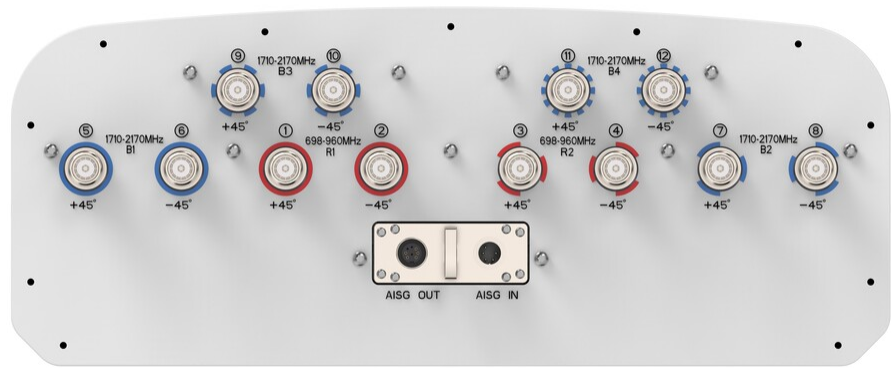
Array Layout



Array ID	Frequency (MHz)	RF Connector	HPBW	RET (SRET)	AISG No.	RET UID
R1	698-960	1 - 2	65°	1	AISG1	ANxxxxxxxxxxxxR1
R2	698-960	3 - 4	65°	2	AISG1	ANxxxxxxxxxxxxR2
B1	1710-2170	5 - 6	65°	3	AISG1	ANxxxxxxxxxxxxB1
B2	1710-2170	7 - 8	65°	4	AISG1	ANxxxxxxxxxxxxB2
B3	1710-2170	9 - 10	65°	5	AISG1	ANxxxxxxxxxxxxB3
B4	1710-2170	11 - 12	65°	6	AISG1	ANxxxxxxxxxxxxB4

(Sizes of colored boxes are not true depictions of array sizes)

Port Configuration



Electrical Specifications

Impedance

50 ohm

Operating Frequency Band

1710 – 2170 MHz | 698 – 960 MHz

Polarization

±45°

Electrical Specifications

RRH4-65A-R6VBU

	R1,R2	R1,R2	R1,R2	B1-B4	B1-B4
Frequency Band, MHz	698–803	790–890	890–960	1710–1880	1920–2170
RF Port	1-4	1-4	1-4	5-12	5-12
Gain, dBi	14	14.4	14.8	15.1	15.6
Beamwidth, Horizontal, degrees	64	61	58	60	58
Beamwidth, Vertical, degrees	12.9	11.9	11	9.3	8.4
Beam Tilt, degrees	2–12	2–12	2–12	2–12	2–12
USLS (First Lobe), dB	15	15	15	15	15
Front-to-Back Total Power at 180° ± 30°, dB	20	22	22	22	22
CPR at Boresight, dB	18	18	18	18	18
Isolation, Cross Polarization, dB	25	25	25	25	25
Isolation, Inter-band, dB	25	25	25	25	25
VSWR Return loss, dB	1.5 14.0	1.5 14.0	1.5 14.0	1.5 14.0	1.5 14.0
PIM, 3rd Order, 2 x 20 W, dBc	-150	-150	-150	-150	-150
Input Power per Port, maximum, watts	250	250	250	200	200

Mechanical Specifications

Wind Loading @ Velocity, frontal	568.0 N @ 150 km/h (127.7 lbf @ 150 km/h)
Wind Loading @ Velocity, lateral	236.0 N @ 150 km/h (53.1 lbf @ 150 km/h)
Wind Loading @ Velocity, rear	639.0 N @ 150 km/h (143.7 lbf @ 150 km/h)
Wind Speed, maximum	200 km/h (124 mph)

Packaging and Weights

Width, packed	610 mm 24.016 in
Depth, packed	315 mm 12.402 in
Length, packed	1725 mm 67.913 in
Weight, gross	37 kg 81.571 lb

Regulatory Compliance/Certifications

Agency	Classification
ISO 9001:2015	Designed, manufactured and/or distributed under this quality management system
UK-ROHS	Compliant

RRH4-65A-R6VBU

* Footnotes

Performance Note Severe environmental conditions may degrade optimum performance