

RRHH-65A-R4VBU



8-port sector antenna, 4x 698–960 and 4x 1710–2170 MHz, 65°HPBW, 4x RET

General Specifications

Antenna Type	Sector
Band	Multiband
Color	Light Gray (RAL 7035)
Grounding Type	RF connector inner conductor and body grounded to reflector and mounting bracket
Performance Note	Outdoor usage
Radome Material	Fiberglass, UV resistant
Radiator Material	Aluminum Low loss circuit board
Reflector Material	Aluminum
RF Connector Interface	4.3-10 Female
RF Connector Location	Bottom
RF Connector Quantity, mid band	4
RF Connector Quantity, low band	4
RF Connector Quantity, total	8

Remote Electrical Tilt (RET) Information

RET Hardware	CommRET v2
RET Interface	8-pin DIN Female 8-pin DIN Male
RET Interface, quantity	1 female 1 male
Input Voltage	10–30 Vdc
Internal RET	Low band (2) Mid band (2)
Power Consumption, active state, maximum	10 W
Power Consumption, idle state, maximum	2 W
Protocol	3GPP/AISG 2.0 (Single RET)

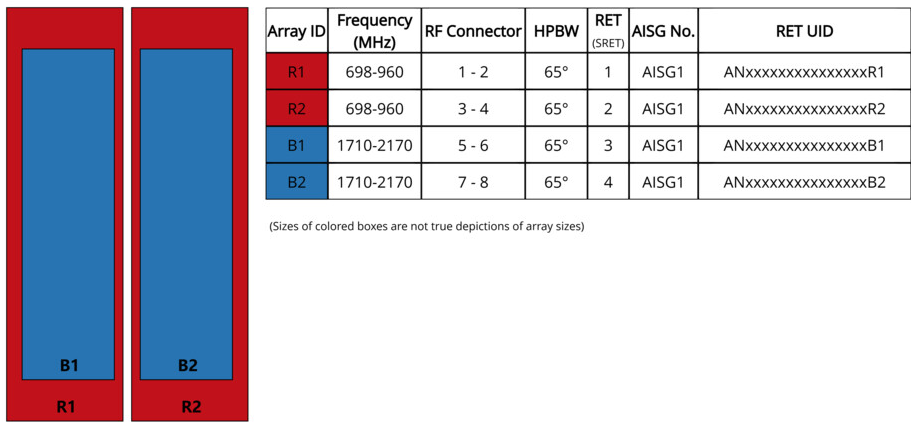
Dimensions

Width	446 mm 17.559 in
-------	--------------------

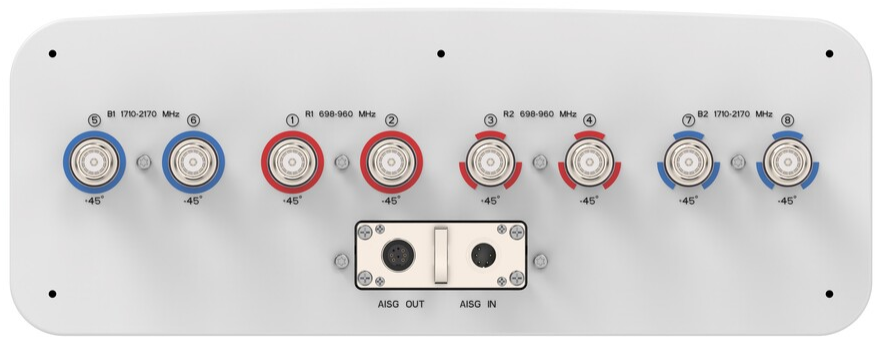
RRHH-65A-R4VBU

Depth	165 mm 6.496 in
Length	1500 mm 59.055 in
Net Weight, antenna only	23 kg 50.706 lb

Array Layout



Port Configuration



Electrical Specifications

Impedance	50 ohm
Operating Frequency Band	1710 – 2170 MHz 698 – 960 MHz
Polarization	±45°

RRHH-65A-R4VBU

Electrical Specifications

	R1,R2	R1,R2	R1,R2	B1,B2	B1,B2
Frequency Band, MHz	698–803	790–890	890–960	1710–1880	1920–2170
RF Port	1-4	1-4	1-4	5-8	5-8
Gain, dBi	14.1	14.4	14.8	15.3	16
Beamwidth, Horizontal, degrees	64	61	58	60	58
Beamwidth, Vertical, degrees	12.9	11.9	11	9.3	8.4
Beam Tilt, degrees	2–12	2–12	2–12	2–12	2–12
USLS (First Lobe), dB	15	15	15	15	15
Front-to-Back Total Power at 180° ± 30°, dB	20	22	22	22	22
CPR at Boresight, dB	18	18	18	18	18
Isolation, Cross Polarization, dB	25	25	25	25	25
Isolation, Inter-band, dB	25	25	25	25	25
VSWR Return loss, dB	1.5 14.0	1.5 14.0	1.5 14.0	1.5 14.0	1.5 14.0
PIM, 3rd Order, 2 x 20 W, dBc	-150	-150	-150	-150	-150
Input Power per Port, maximum, watts	250	250	250	200	200

Mechanical Specifications

Wind Loading @ Velocity, frontal	537.0 N @ 150 km/h (120.7 lbf @ 150 km/h)
Wind Loading @ Velocity, lateral	198.0 N @ 150 km/h (44.5 lbf @ 150 km/h)
Wind Loading @ Velocity, rear	499.0 N @ 150 km/h (112.2 lbf @ 150 km/h)
Wind Speed, maximum	200 km/h (124 mph)

Packaging and Weights

Width, packed	565 mm 22.244 in
Depth, packed	285 mm 11.22 in
Length, packed	1725 mm 67.913 in
Weight, gross	31 kg 68.343 lb

Regulatory Compliance/Certifications

Agency	Classification
ISO 9001:2015	Designed, manufactured and/or distributed under this quality management system

RRHH-65A-R4VBU

UK-ROHS Compliant

* Footnotes

Performance Note Severe environmental conditions may degrade optimum performance

