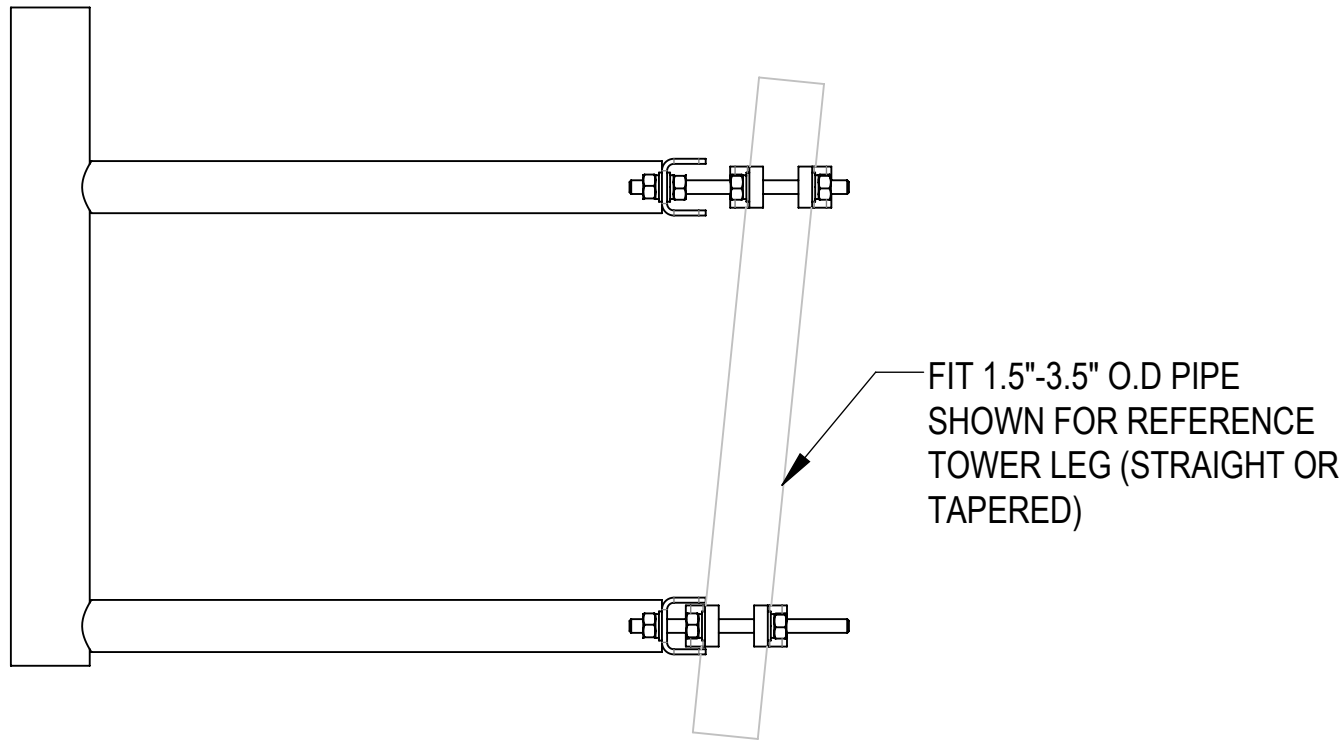
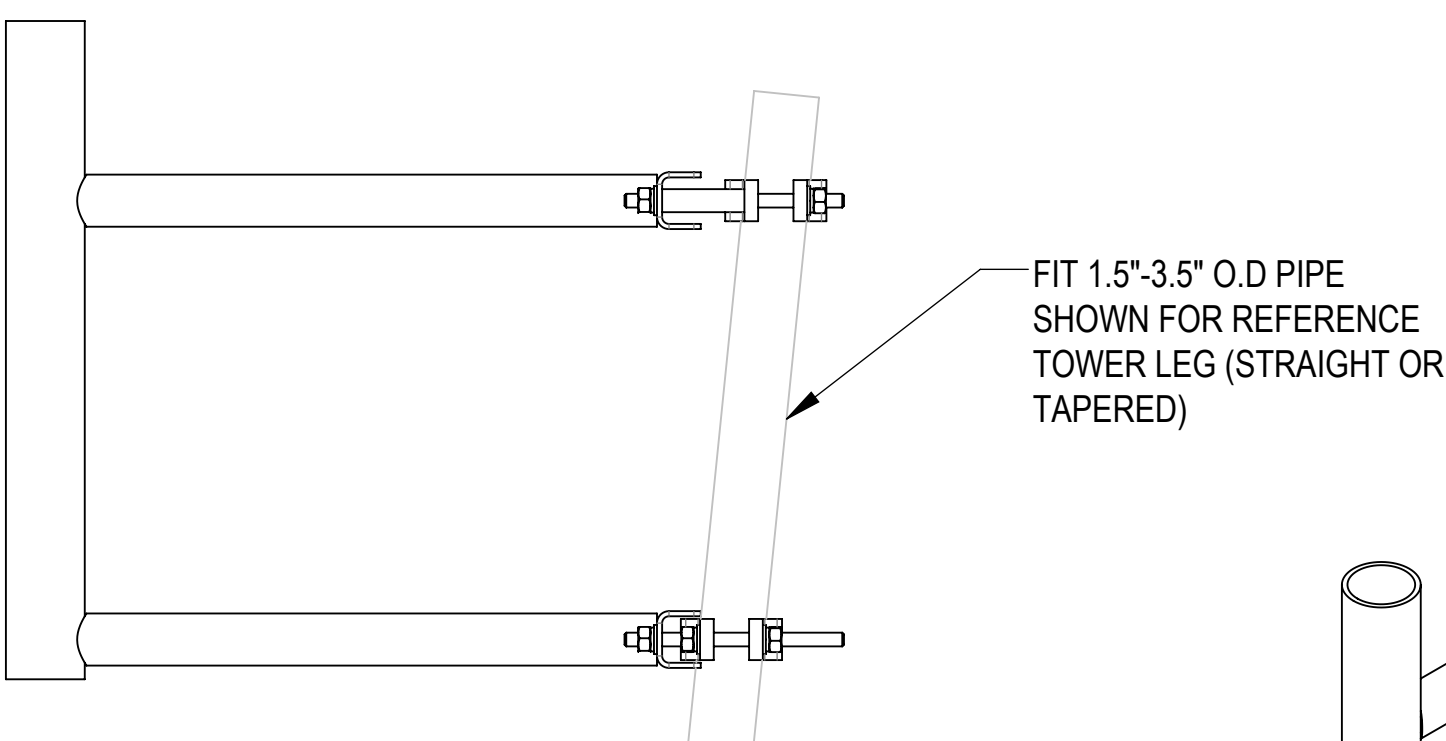


- 1.0 GENERAL NOTES
- 1.1 ALL METRIC DIMENSIONS ARE IN BRACKETS [X. X]
- 1.2 FOR PATENT INFO: <https://www.adwpat.com>
- 2.0 DESIGN NOTES
- 2.1 ANY HAZARDS OR OBSTRUCTIONS TO THE CLIMBING FACILITY AND SAFETY CLIMB MUST BE IDENTIFIED PRIOR TO INSTALLING THE APPURTENANCE. ADDITIONAL PRODUCTS MAY BE REQUIRED TO MAINTAIN THE INTEGRITY OF THE SAFETY CLIMB. DURING INSTALLATION, TEMPORARY AND/OR PERMANENT PRECAUTIONARY MEASURES SHOULD BE TAKEN TO PRESERVE THE CLIMBING FACILITY AND/OR SAFETY CLIMB.
- 3.0 MANUFACTURING/SPECIAL REQUIREMENTS
- 3.1 TIGHTEN ALL BOLTS SECURING FLAT PLATES BY THE TURN-OF-NUT METHOD.
- 4.0 TEST
- 5.0 PACKAGING
- 5.1 PACKAGING SHALL MEET ANDREW REQUIREMENTS PER DOCUMENT IS-PL-3005
- 5.2 PRINTED DOCUMENT TO BE PLACED INSIDE POLYBAG AND THEN IN SHIPPING CONTAINER
- 5.3 EXTRA HARDWARE MAY BE SUPPLIED, BAGGED AND SHIPPED

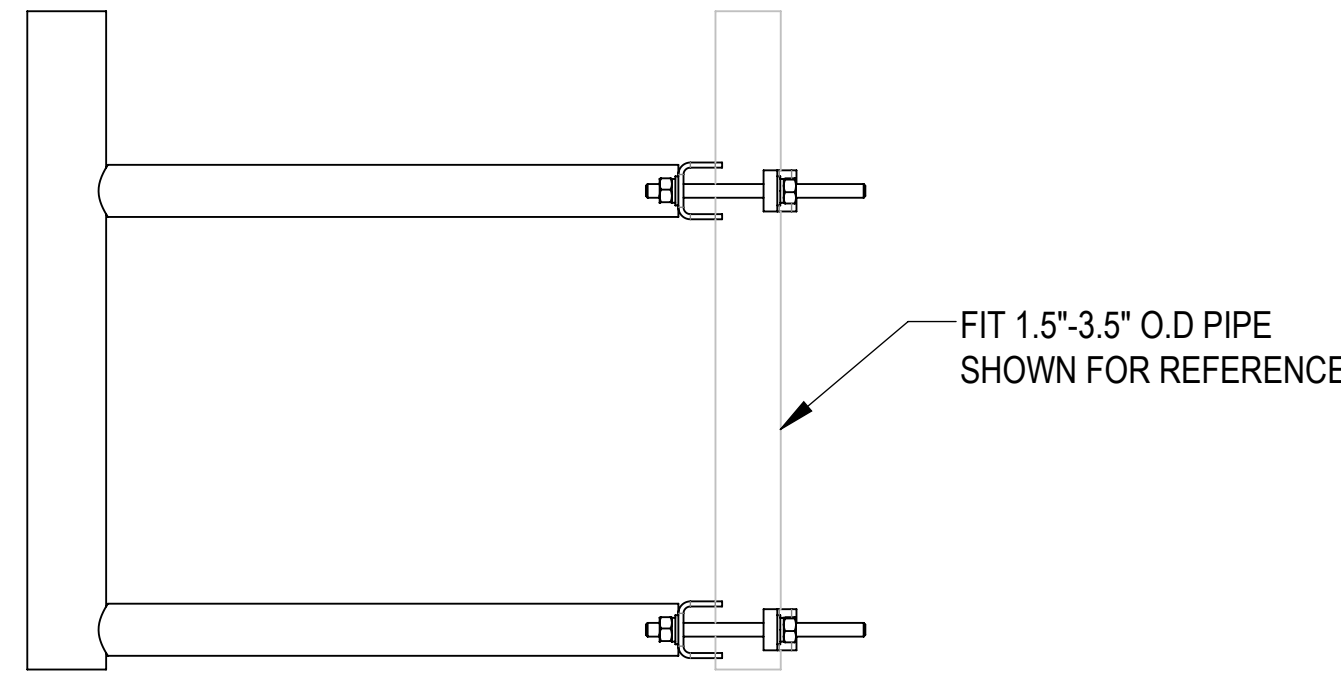
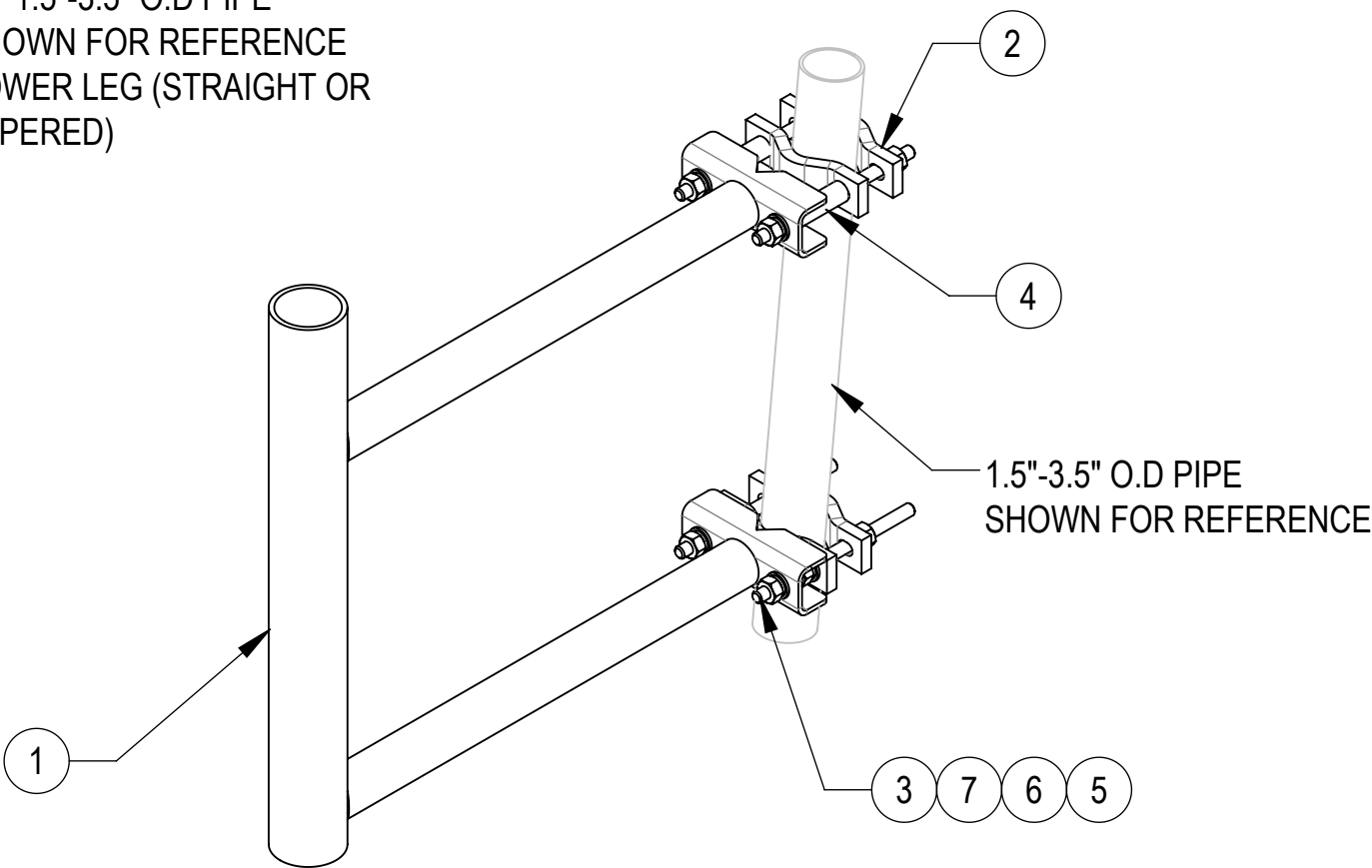
REVISIONS			
REV.	DESCRIPTION	DATE	APPROVED
B	REVISED AND REDRAWN	JTS 02APR01	
C	UPDATE HARDWARE KIT	ACG 22FEB06	
D	UPDATED DRAWING FORMAT TO NEW	LL1090 14OCT25	BA1025 50105334AMO



TAPERED LEG INSTALLATION WITHOUT OFFSET SLEEVES



TAPERED LEG INSTALLATION WITH OFFSET SLEEVES


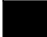


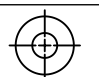
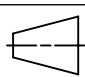


STRAIGHT LEG INSTALLATION

COMPONENT PART NUMBERS PROVIDED FOR ASSEMBLY PURPOSES;
INDIVIDUAL COMPONENTS MAY BE SHIPPED AS PARTS WITHIN AN INCLUDED KIT.

ITEM	PART NO.	DESCRIPTION	QTY.	WEIGHT	NOTE NO.
1	DM10001	24" STAND-OFF BRACKET	1	23.65 LBS	
2	SCP10	CLAMP HALF: 1/2", 9/16" HOLE,4-1/8" (EA)	4	1.20 LBS	
3	MT-379-8	1/2" X 8" GALV THREADED ROD	4	0.44 LBS	
4	OS312	1/2" X 3" OFFSET SLEEVE	2	0.21 LBS	
5	GWFO4A	1/2" GALV FLAT WASHER (A325)	14	0.02 LBS	
6	GWL-04	1/2" GALV LOCK WASHER	14	0.01 LBS	
7	GN-04A	1/2" GALV HEX NUT (A194 2H)	14	0.07 LBS	

DENSITY	MASS	37.83	lbs/in³
VOLUME	134.02		in³
SURFACE AREA	1598.47		in²
HEIGHT	6.0"		
LENGTH	30.5"		
WIDTH	24.0"		

<div>ANDREW® an Amphenol company</div>																	
TOLERANCES						SAP MATERIAL MASTER											
1 PLACE .X[X] ± 0.2[6.3]			3 PLACE .XXX[X] ± 0.06[1.5]			DM-100											
2 PLACE .XX[X] ± 0.12[3.0]			ANGLES ± 2°														
FINISH						MATERIAL											
UNLESS OTHERWISE SPECIFIED DIMENSIONS ARE IN INCHES INTERPRET PER ANSI Y 14.5M-1994		NAME		DATE		24" DISH STAND-OFF BRACKET KIT											
	CE	JTS	02APR01														
	RW	LL1090	10/16/2025														
																	
	AD	YMENG	10/20/2025		SCALE 1:4	DM-100											
	RE	YMENG	10/20/2025														
	ECN 50105334AMO																
SIZE		Auth Group		INSL		MODEL			DRAWING			SHEET 1 OF 1					
C						VERSION		STATUS		REVISION				VERSION		STATUS	
						01		RE		D		01		RE		D	

Confidential