

1.0 GENERAL NOTES  
1.1 ALL METRIC DIMENSIONS ARE IN BRACKETS [X. X]  
1.2 FOR PATENT INFO: <https://www.adwpat.com>

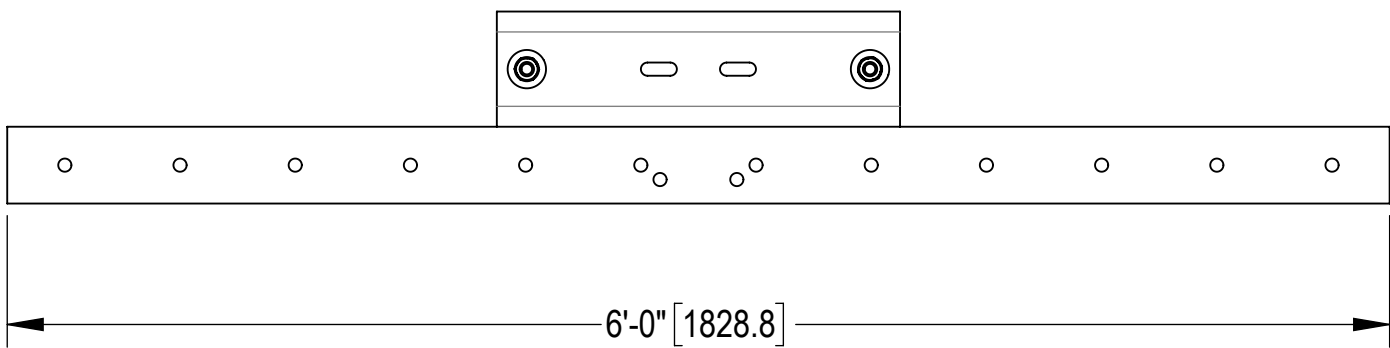
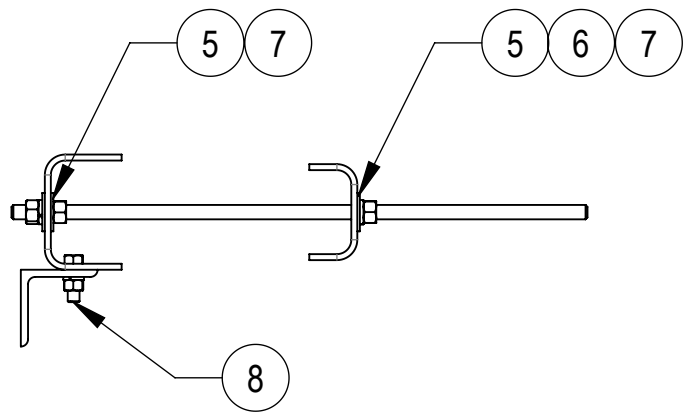
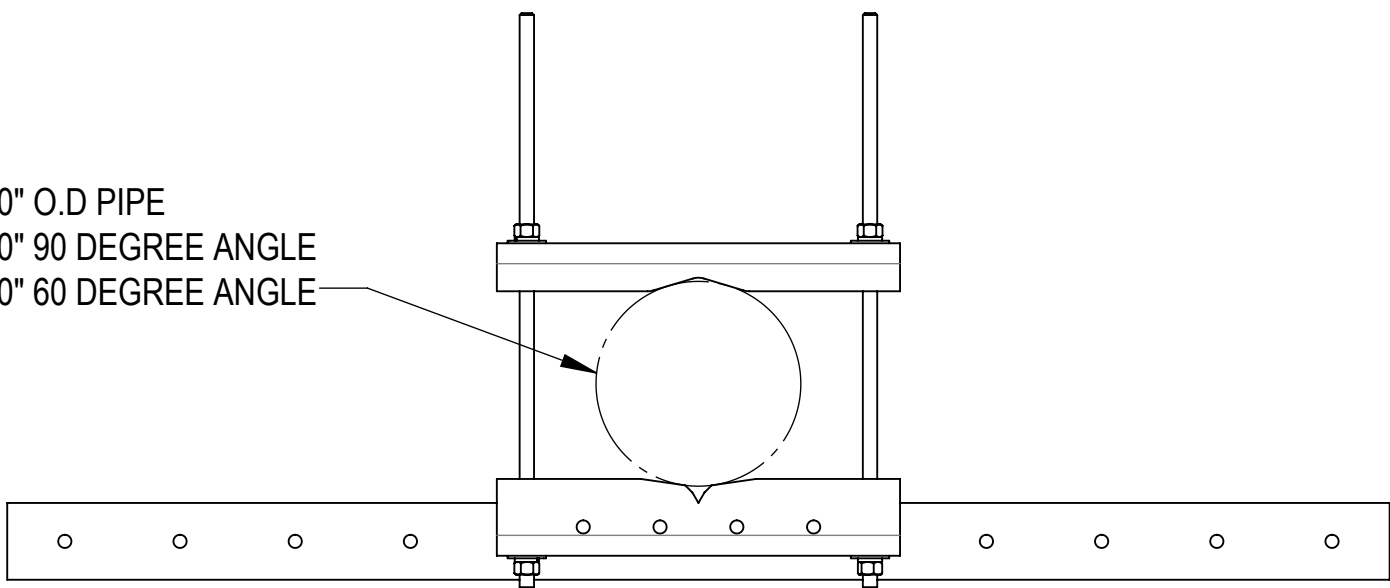
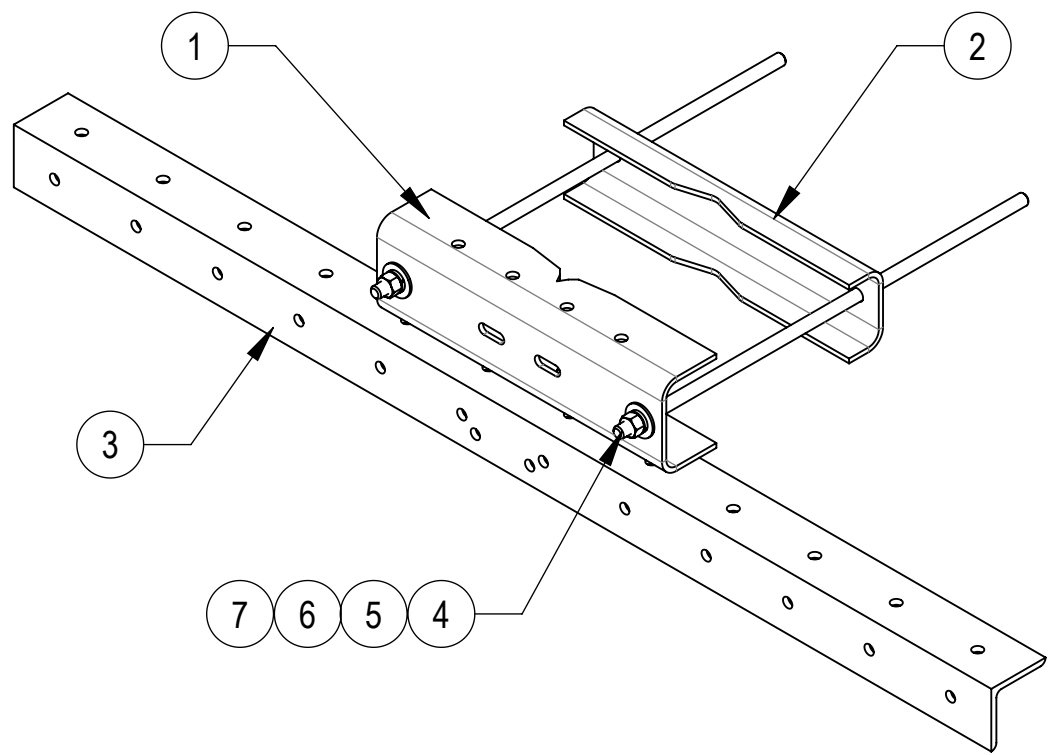
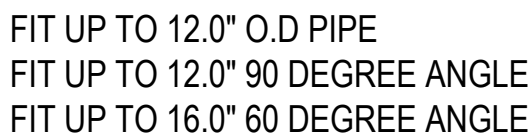
2.0 DESIGN NOTES

3.0 MANUFACTURING/SPECIAL REQUIREMENTS  
3.1 TIGHTEN ALL BOLTS SECURING FLAT PLATES BY THE TURN-OF-NUT METHOD. TIGHTEN ALL U-BOLTS USING TURN-OF-NUT METHOD WITH ATTENTION TO LEAVE EQUAL DISTANCE AND EQUAL FORCE ON EACH LEG OF THE U-BOLT.

4.0 TEST

5.0 PACKAGING  
5.1 PACKAGING SHALL MEET ANDREW REQUIREMENTS PER DOCUMENT IS-PL-3005  
5.2 PRINTED DOCUMENT TO BE PLACED INSIDE POLYBAG AND THEN IN SHIPPING CONTAINER  
5.3 EXTRA HARDWARE MAY BE SUPPLIED, BAGGED AND SHIPPED

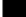


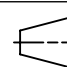
REVISIONS			
REV.	DESCRIPTION	DATE	APPROVED
A	INITIAL RELEASE	MSM 21APR10	TP
B	UPDATED DRAWING FORMAT: GWF-06 (ITEM 5) 6 WAS 4, GN-06 (ITEM 7) 6 WAS 4	YC1059 23OCT25	BA1025 50105518AMO



COMPONENT PART NUMBERS PROVIDED FOR ASSEMBLY PURPOSES;  
INDIVIDUAL COMPONENTS MAY BE SHIPPED AS PARTS WITHIN AN INCLUDED KIT.

ITEM	PART NO.	DESCRIPTION	QTY.	WEIGHT	NOTE NO.
1	SMU201601	LARGE SADDLE MOUNT, 16" TOWER LEG	1	22.42 LBS	
2	SMU201602	CLAMP PLATE	1	15.48 LBS	
3	MD-CSA6	3/8" X 4" X 4" TIE BACK SUPPORT ANGLE	1	56.30 LBS	
4	MT38430B7	3/4" X 30" GALV THREADED ROD, GRADE B7	2	3.73 LBS	
5	GWF-06	3/4" GALV FLAT WASHER	6	0.10 LBS	
6	GWL-06	3/4" GALV LOCK WASHER	4	0.04 LBS	
7	GN-06	3/4" GALV HEX NUT	6	0.15 LBS	
8	GB-05205	5/8" X 2" GALV BOLT KIT	2	0.26 LBS	

DENSITY	lbs/in³
MASS	104.04 lbs
VOLUME	369.20 in³
SURFACE AREA	2286.14 in²
HEIGHT	10.0"
LENGTH	48.0"
WIDTH	30.0"

UNLESS OTHERWISE SPECIFIED DIMENSIONS ARE IN INCHES INTERPRET PER ANSI Y 14.5M-1994		NAME	DATE
	CE	MSM	21APR10
	RW	YC1059	10/27/2025
			
	AD	YMENG	10/28/2025
	RE	YMENG	10/28/2025
	ECN 50105518AMO		
SIZE	Auth Group	INSL	
<b>C</b>			VERSION
			01

TITLE					
LARGE LEG SADDLE MOUNT SUPPORT ANGLE, 6'					
SCALE		DOCUMENT NO.			
1:10		MDL-SSA6			
MODEL		DRAWING			SHEET 1 OF 1
STATUS	REVISION	VERSION	STATUS	REVISION	
RE	B	01	RE	B	