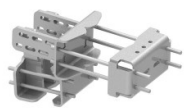


SF-MTI-AMK-001

Mount to Tower Interaction Stress Relief Bracket Kit for existing SFG2xRHDX Series Sector Frames with extended 10' Spine



Product Classification

Product Type	Bracket kit
Product Series	G2

General Specifications

Mounting	Round and angle legs
Tower Taper	Non-tapered Tapered

Dimensions

Mounting Diameter, maximum	203.2 mm 8 in
Mounting Diameter, minimum	48.26 mm 1.9 in

Material Specifications

Material Type	Hot dip galvanized steel
---------------	--------------------------

Packaging and Weights

Included	Brackets Mounting hardware
Packaging quantity	1
Weight, net	38.841 kg 85.63 lb