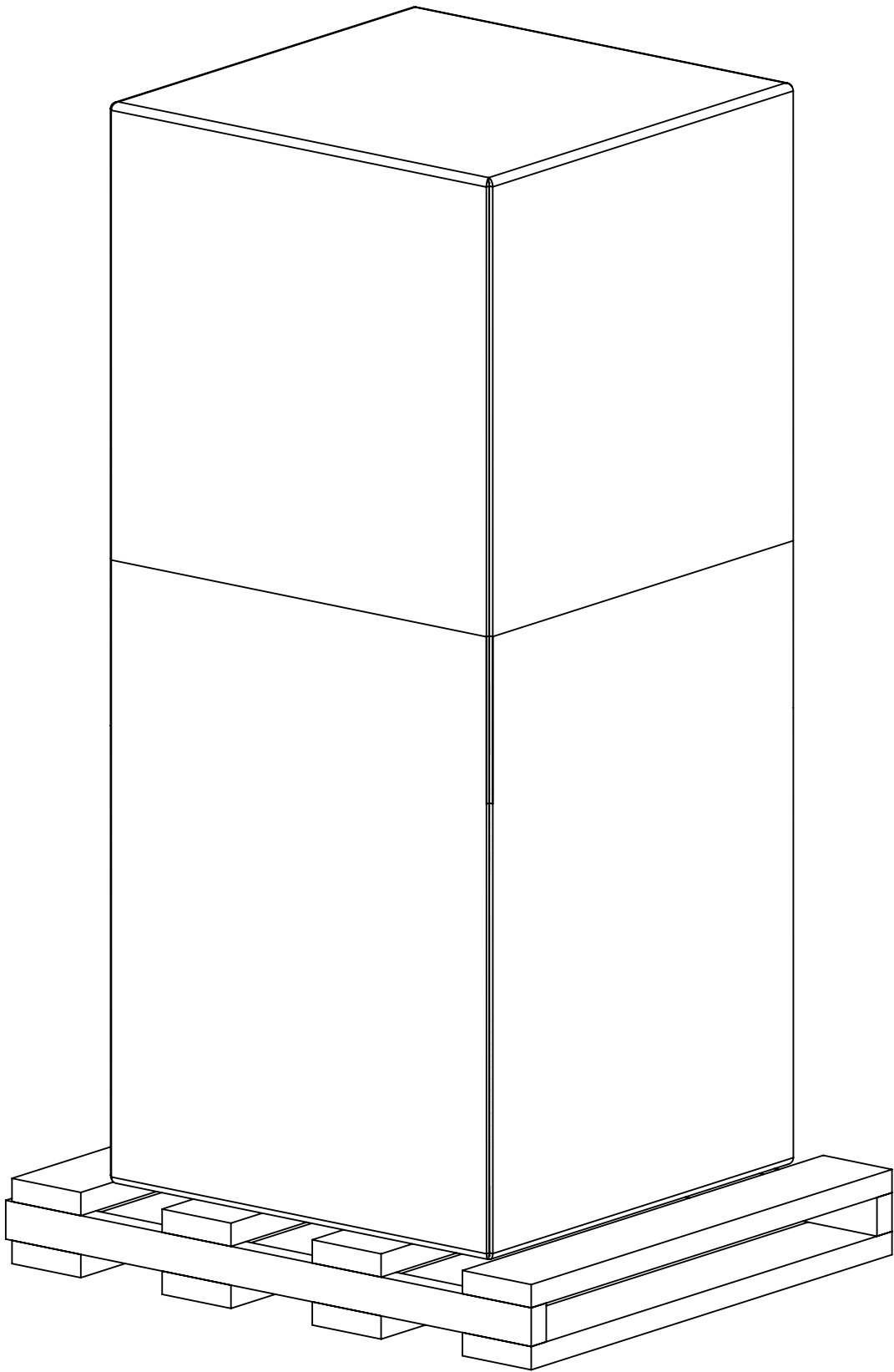
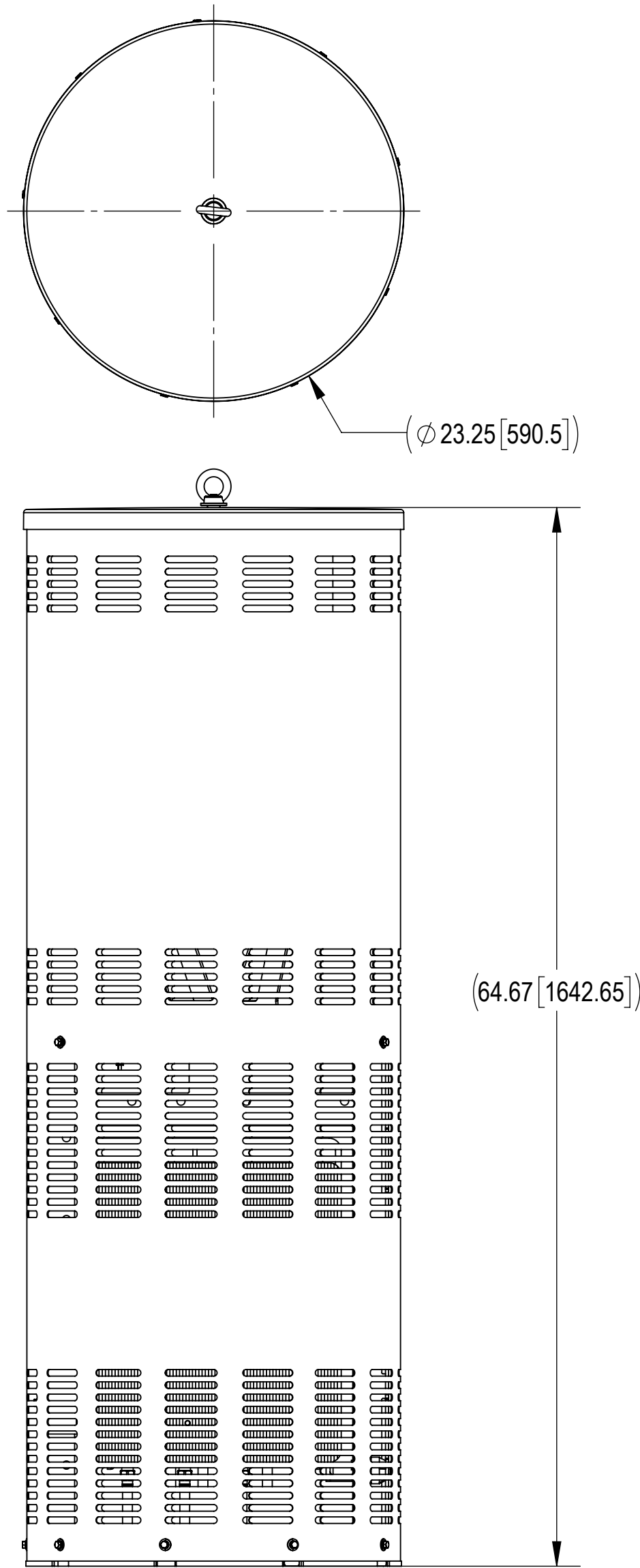
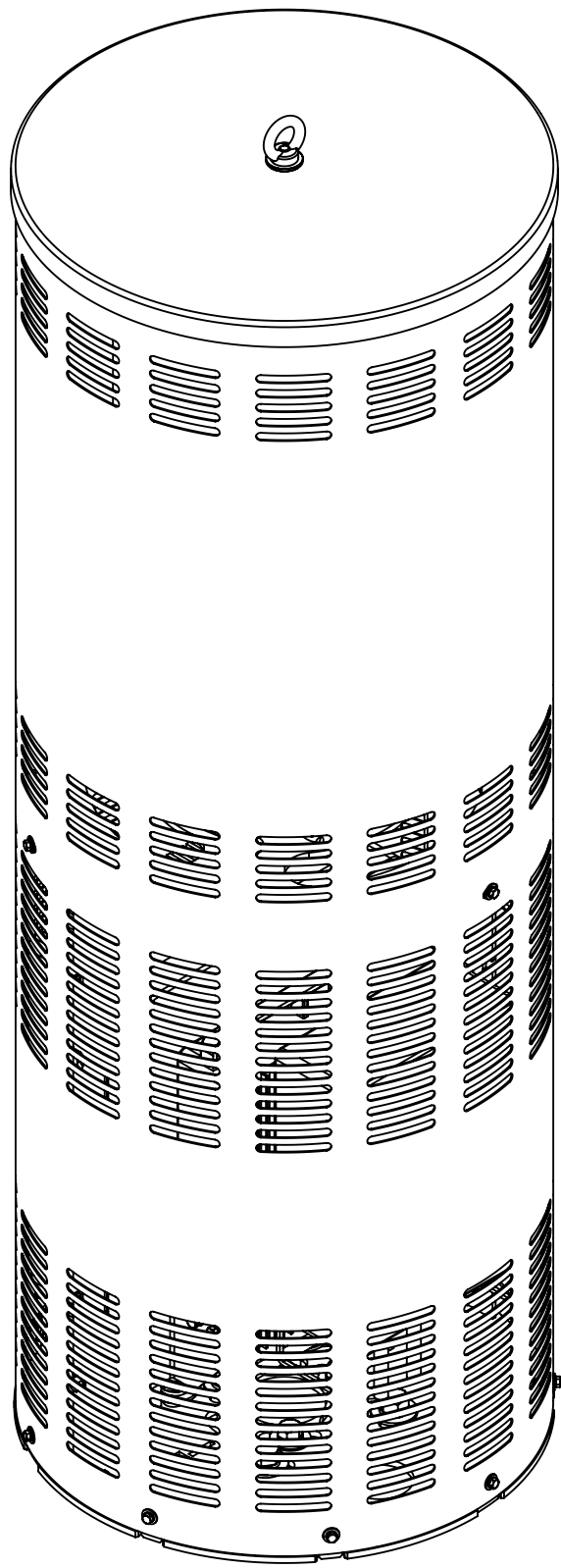


Installation Instructions

860670696-002-INSTALL INSTALLATION INSTRUCTION

PT22, PS METRO, 65" TALL



REVISIONS			
REV.	DESCRIPTION	DATE	APPROVED
A	INITIAL RELEASE	MS1288 25AUG25	WQ1001 50104347AMO

This table show the evolution and history of document from initial to current version.

Further information regarding ANDREW's commitment can be found at <https://www.andrew.com/sustainability/>.
Visit our website or contact your local ANDREW representative for more information.
This product is covered by one or more U.S. patents or their foreign equivalents. For patents, see www.adwpat.com

Installation Instructions

- 1.0 GENERAL NOTES
- 1.1 ALL METRIC DIMENSIONS ARE IN BRACKETS [X.X]

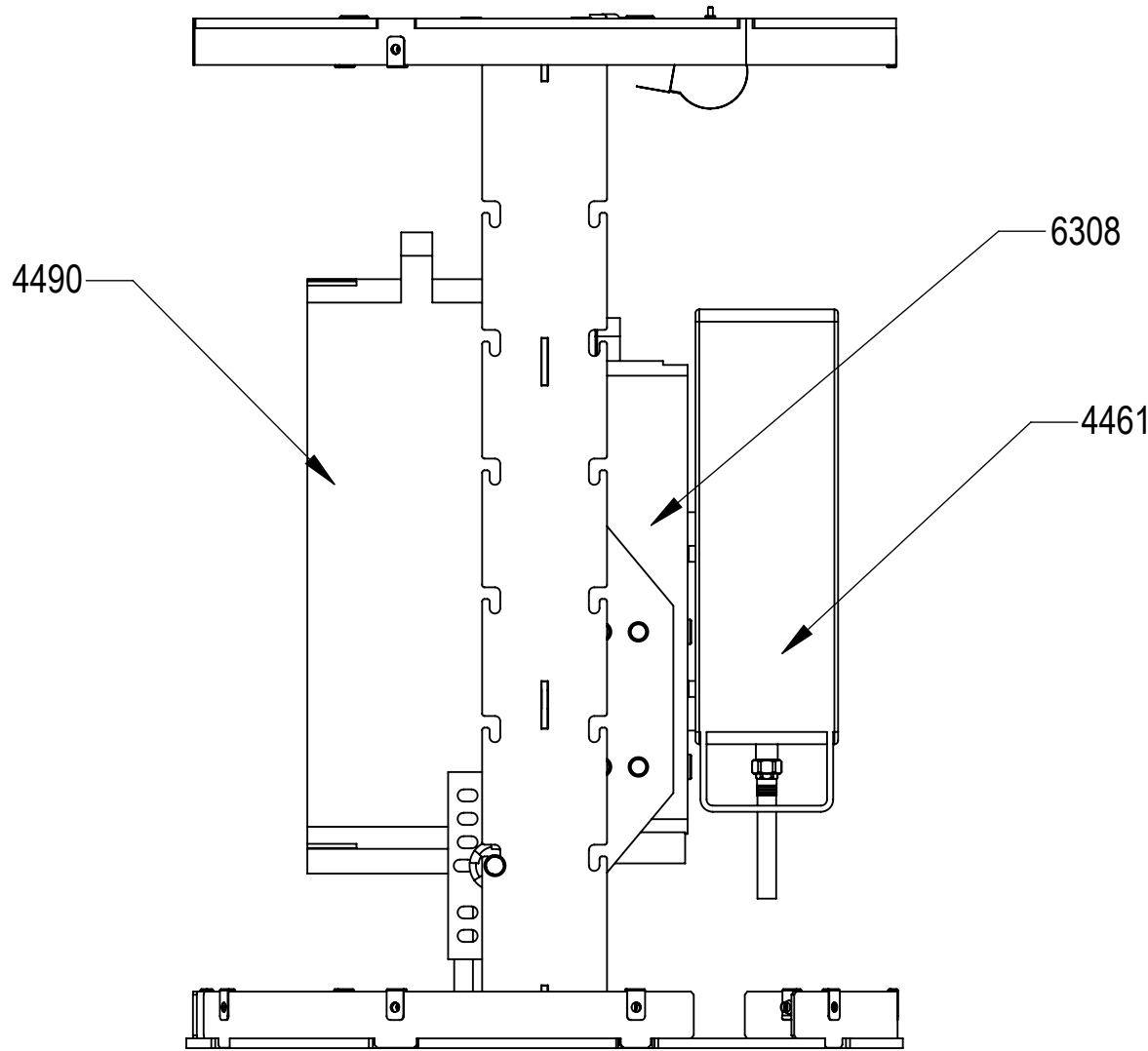
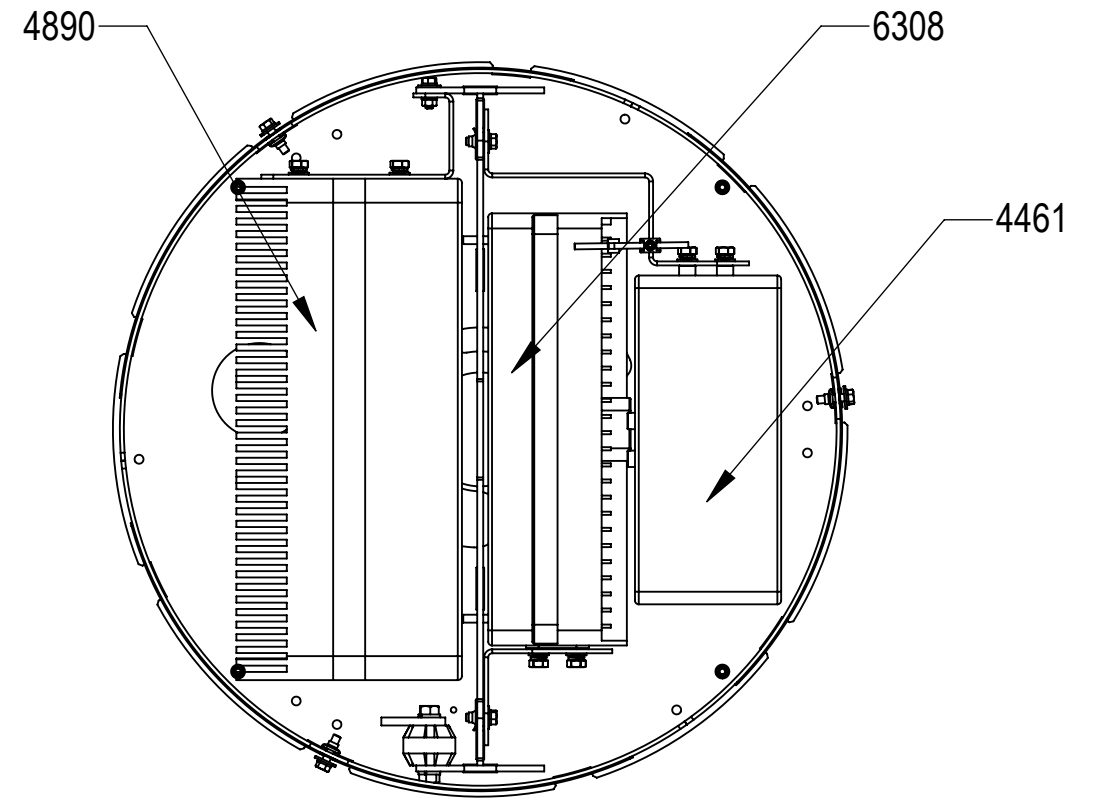
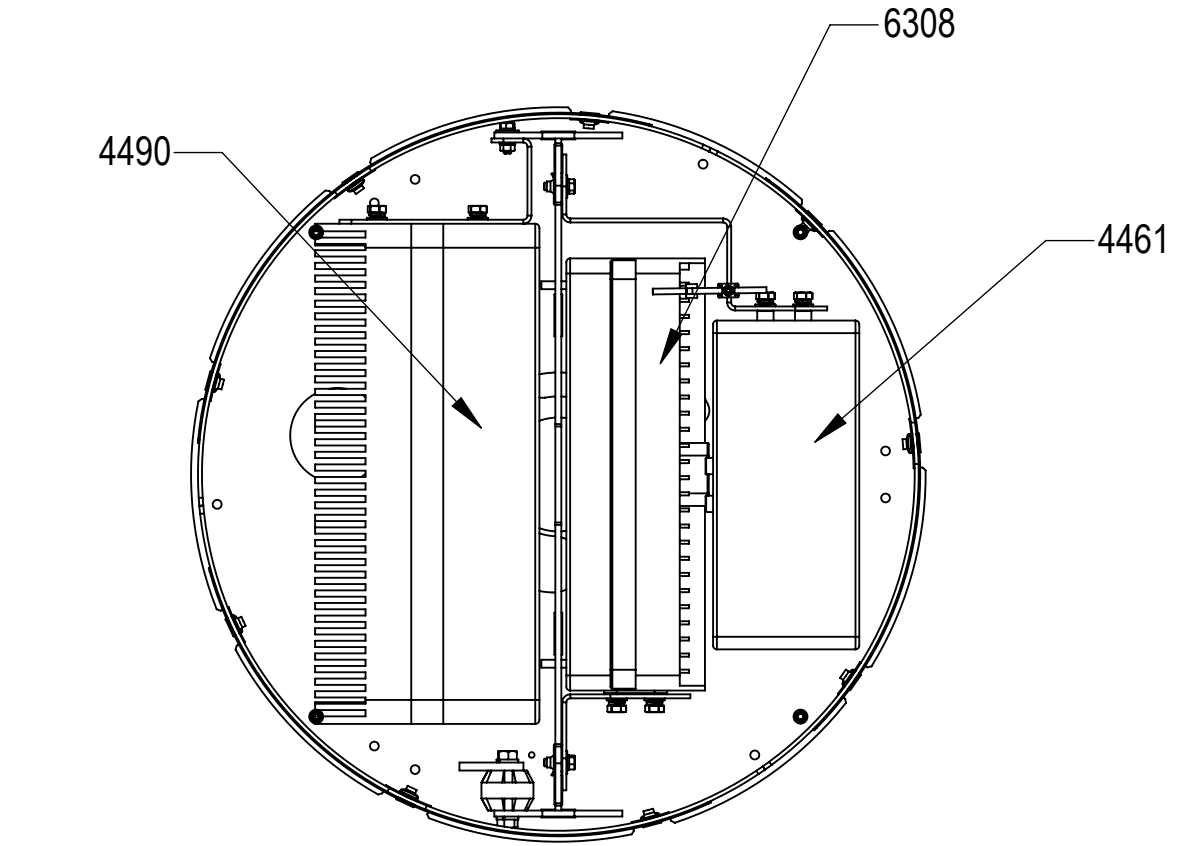
1.2 FEATURES CRITICAL TO QUALITY ARE INDICATED IN ROUNDED BOX X.X

1.3 3D DIGITAL FILES ARE FOR REFERENCE. IN CASE OF CONFLICTS FOLLOW PDF
- 2.0 DESIGN NOTES
- 3.0 MANUFACTURING/SPECIAL REQUIREMENTS
- 3.1 TIGHTEN HARDWARE, TORQUE VALUE ARE SHOWN BELOW AS REFERENCE,
M5: TORQUE 23.0 IN-LB OR 2.6 N-M
M6: TORQUE 40.0 IN-LB OR 4.5 N-M (W/ CLIP NUT)
M6: TORQUE 46.0 IN-LB OR 5.2 N-M (W/ THREADED CAST AL)
M6: TORQUE 75.0 IN-LB OR 8.5 N-M (W/ STEEL NUT)
M8: TORQUE 6.6 FT-LB OR 9.0 N-M (W/ THREADED CAST AL)
3/8-16: TORQUE 19.6 FT-LB OR 26.6 N-M

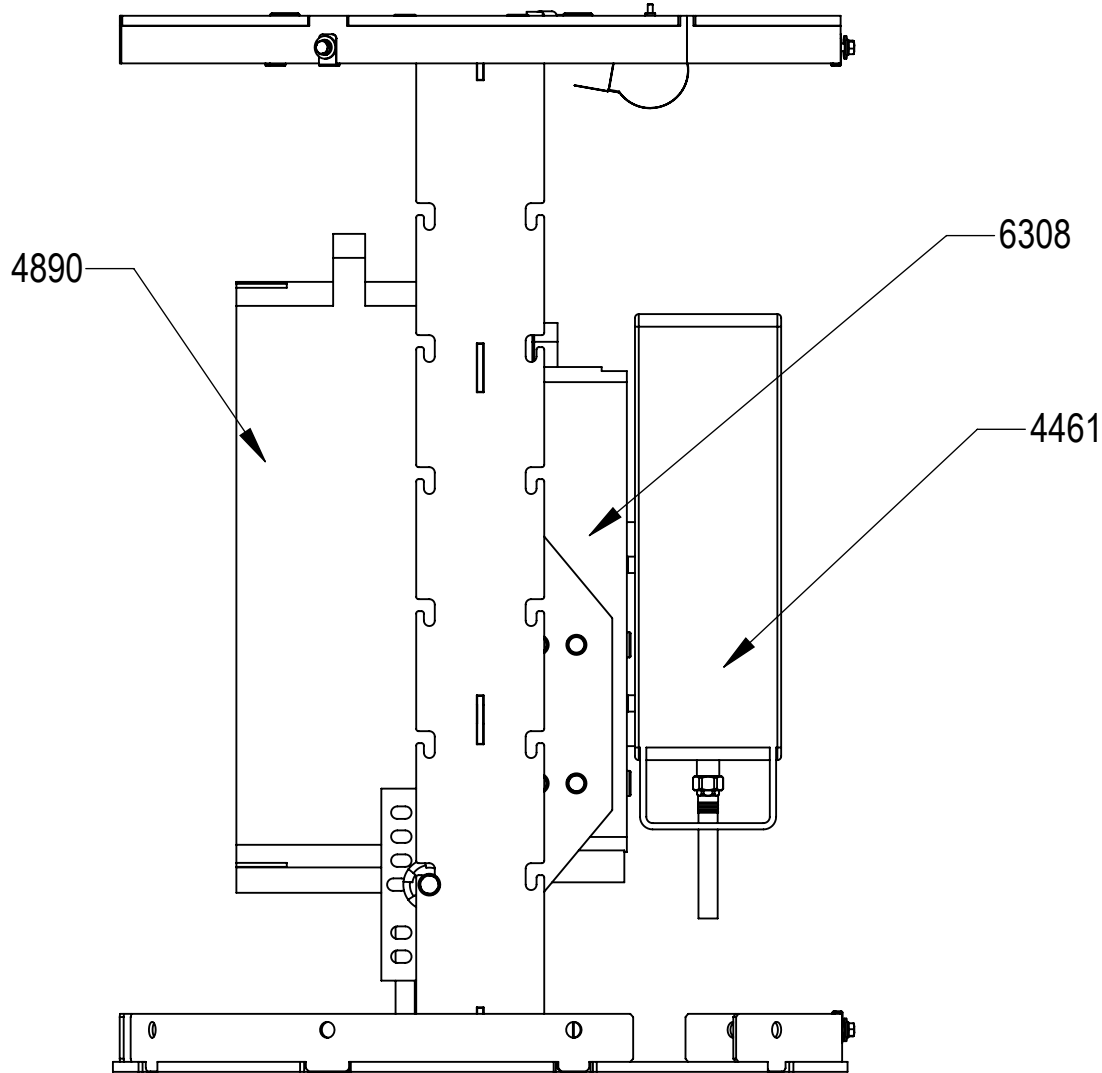
3.2 CONFIGURATION AND QUANTITY OF EQUIPMENTS IN INSTALLATION ARE LISTED ON TABLE

3.3 THE EYEBOLT ONLY SUSTAIN THE WEIGHT OF SHROUD ASSY(MTM1222-4000-XX)
- 4.0 TEST
- 5.0 PACKAGING
- 5.1 THIS PRINTED DOCUMENT TO BE PLACED INSIDE SHIPPING BOX FOR CUSTOMER INSTALLATION

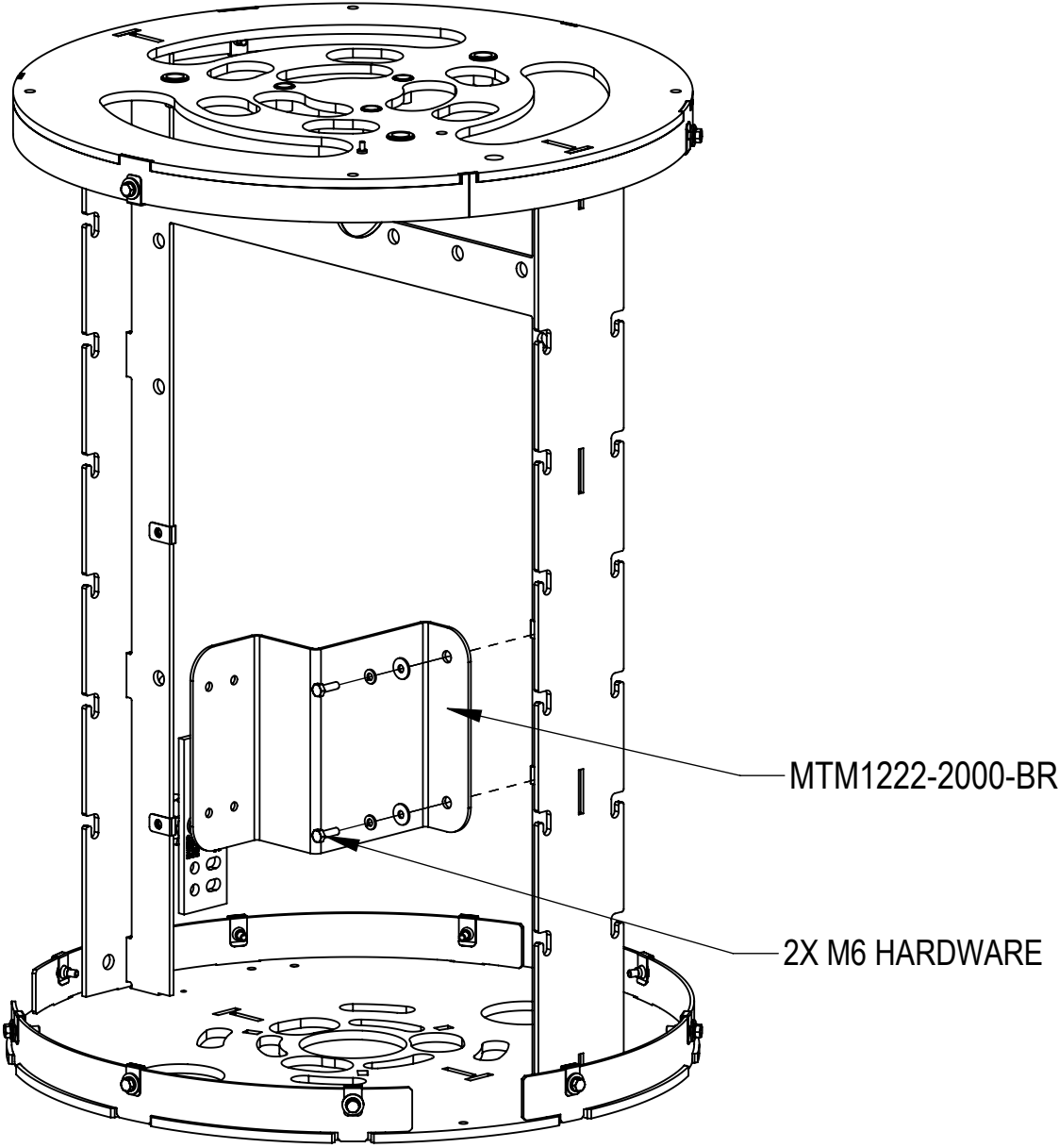
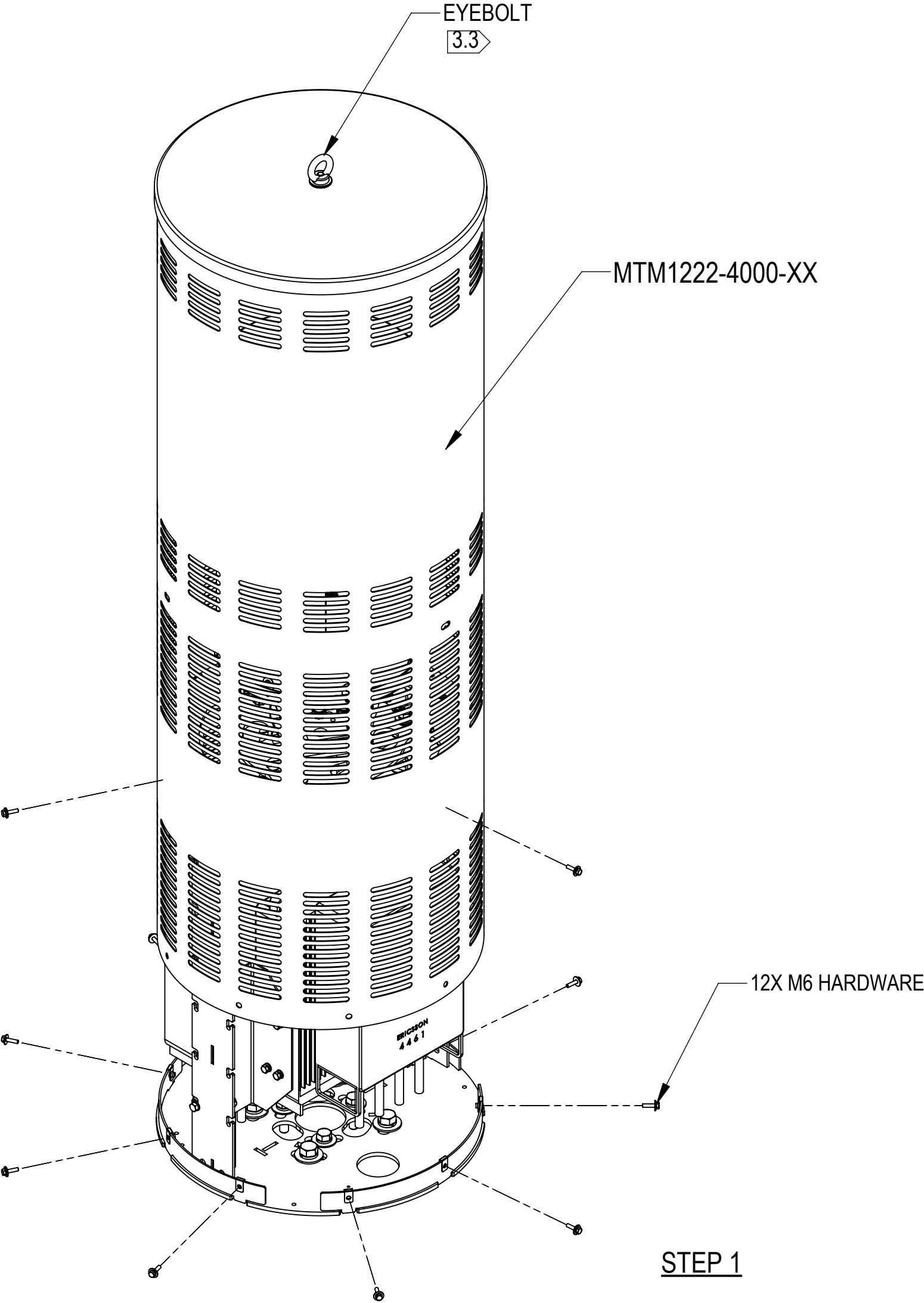
CONFIGURATION	3.2 APPROVED ERICSSON RADIO CONFIGURATIONS			
	4490	4890	4461	6308
1	1		1	1
2		1	1	1



CONFIGURATION 1

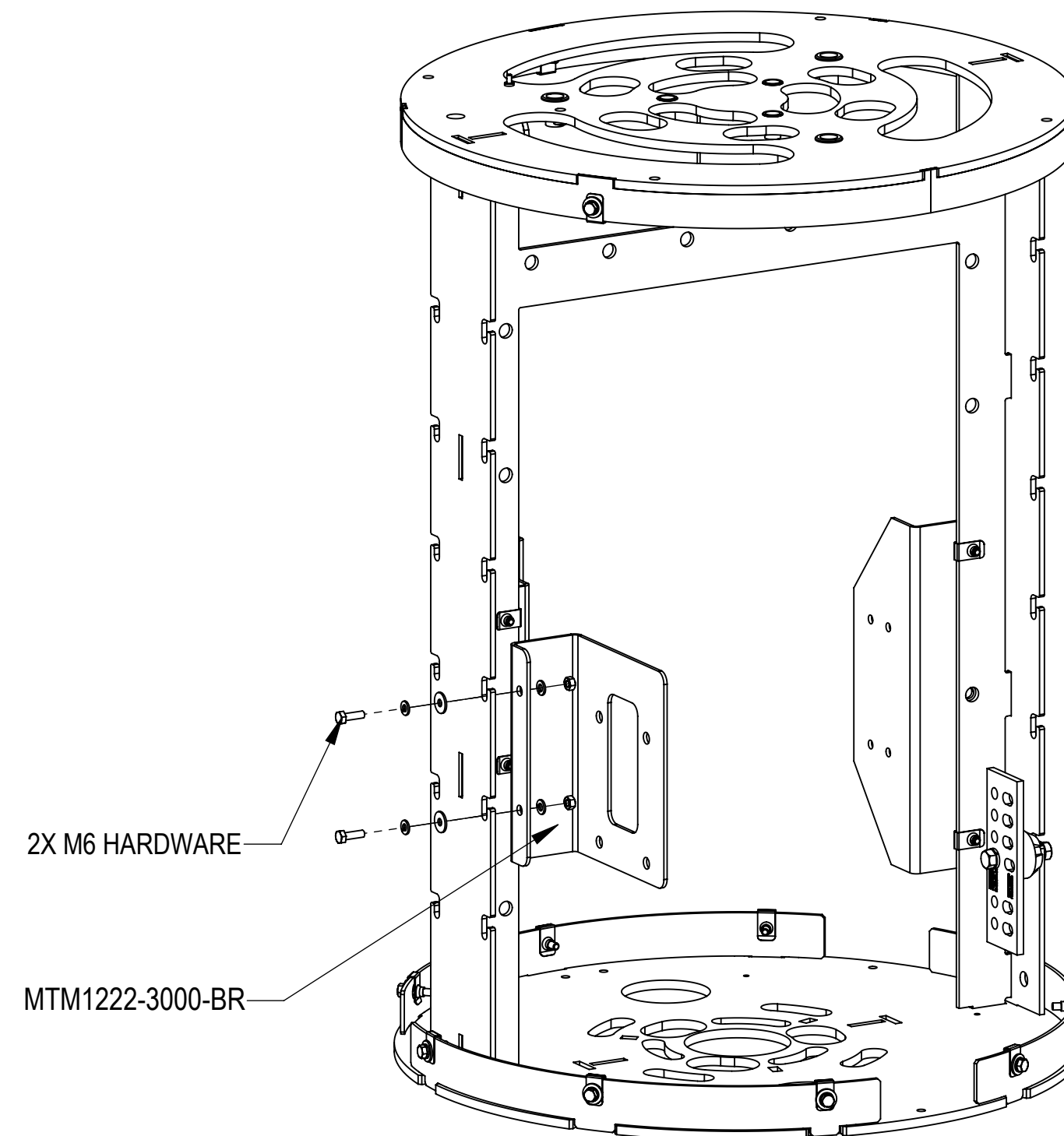
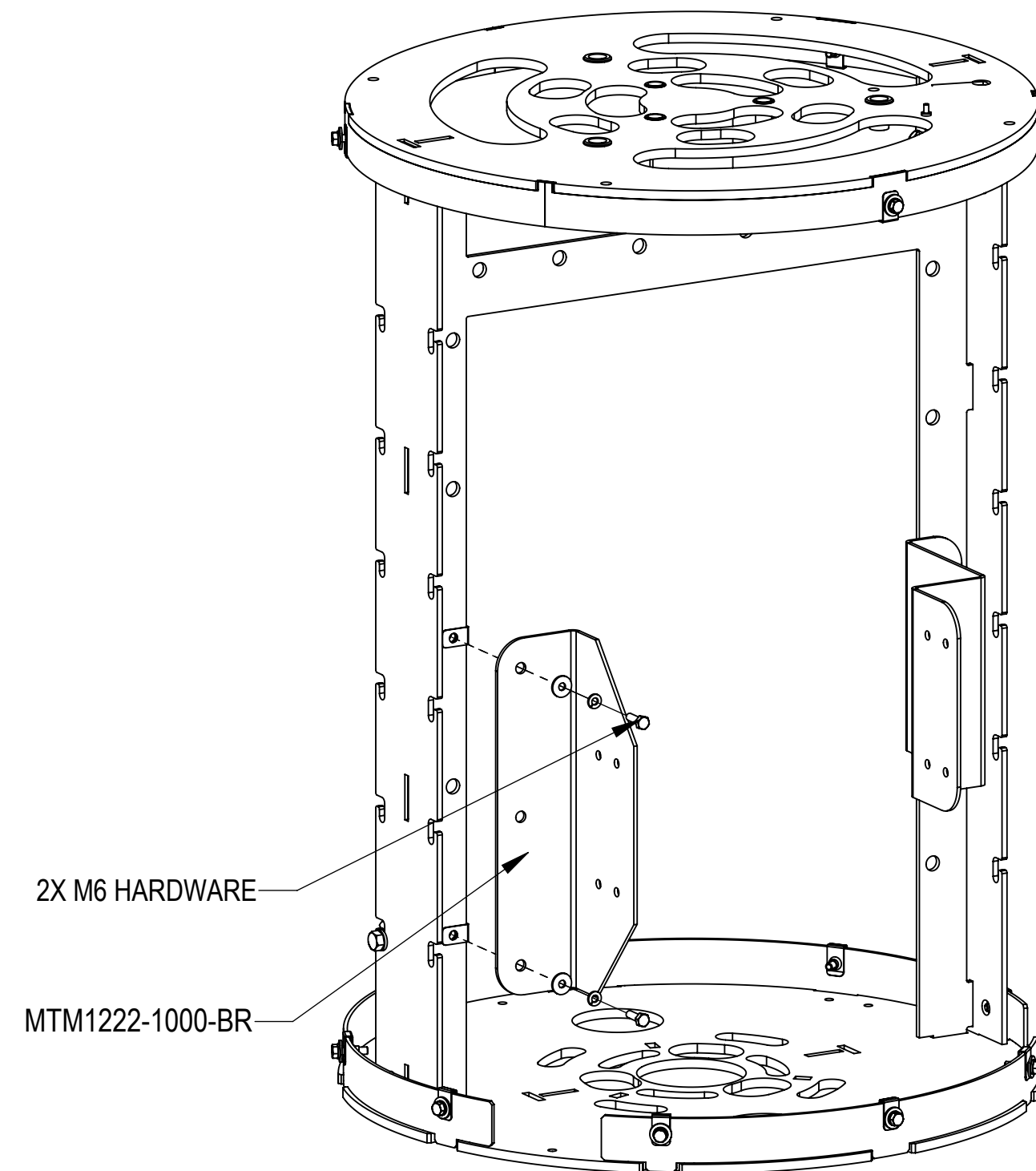


CONFIGURATION 2



STEP 1

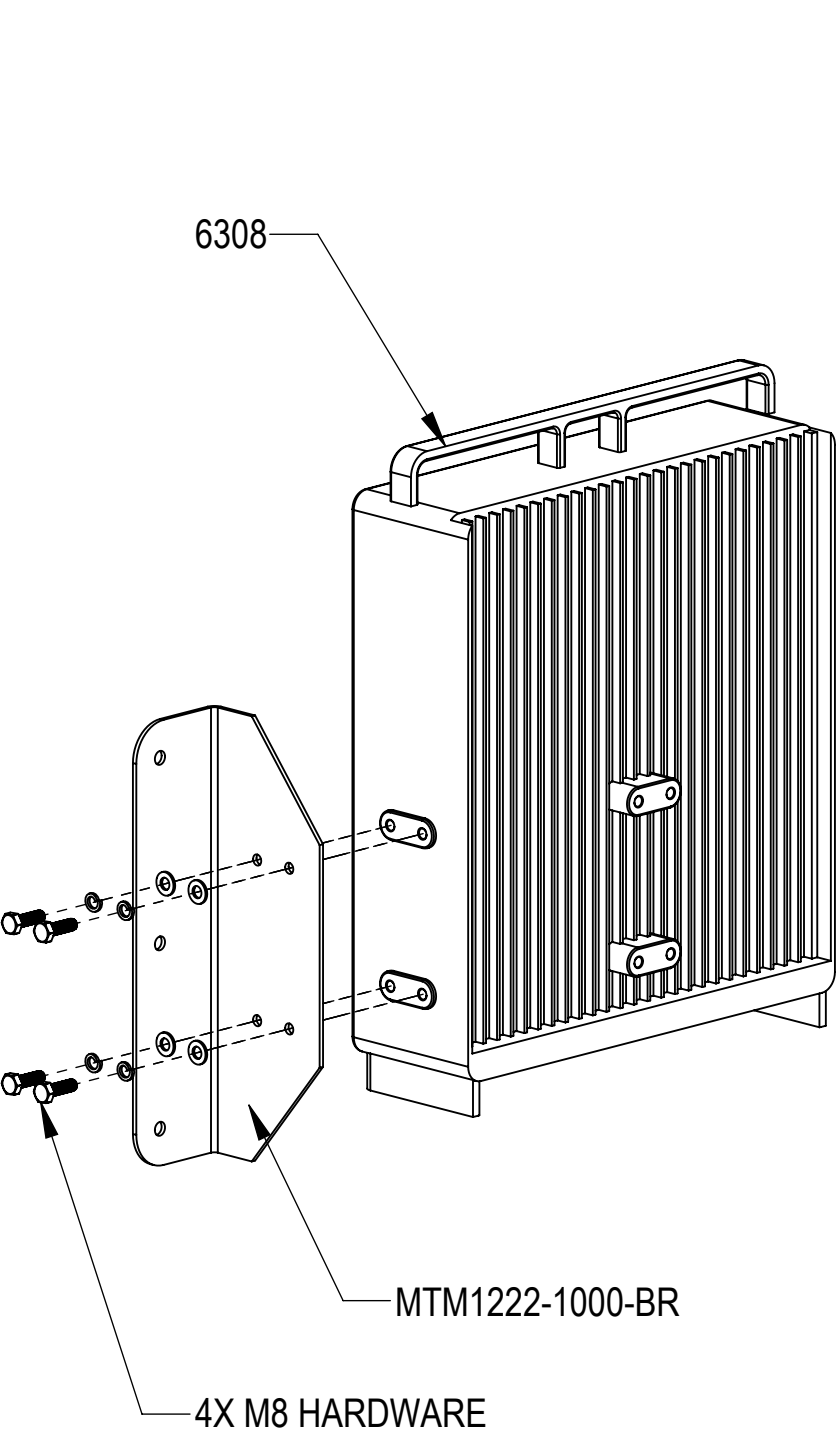
- A) UNINSTALL PRE-INSTALLED RADOME MTM1222-4000-XX. RETAIN HARDWARE FOR INSTALLING WITH PSU IN STEP 3
- B) UNINSTALL PRE-INSTALLED BRACKET MTM1222-2000-BR. RETAIN HARDWARE FOR INSTALLING WITH PSU IN STEP 3



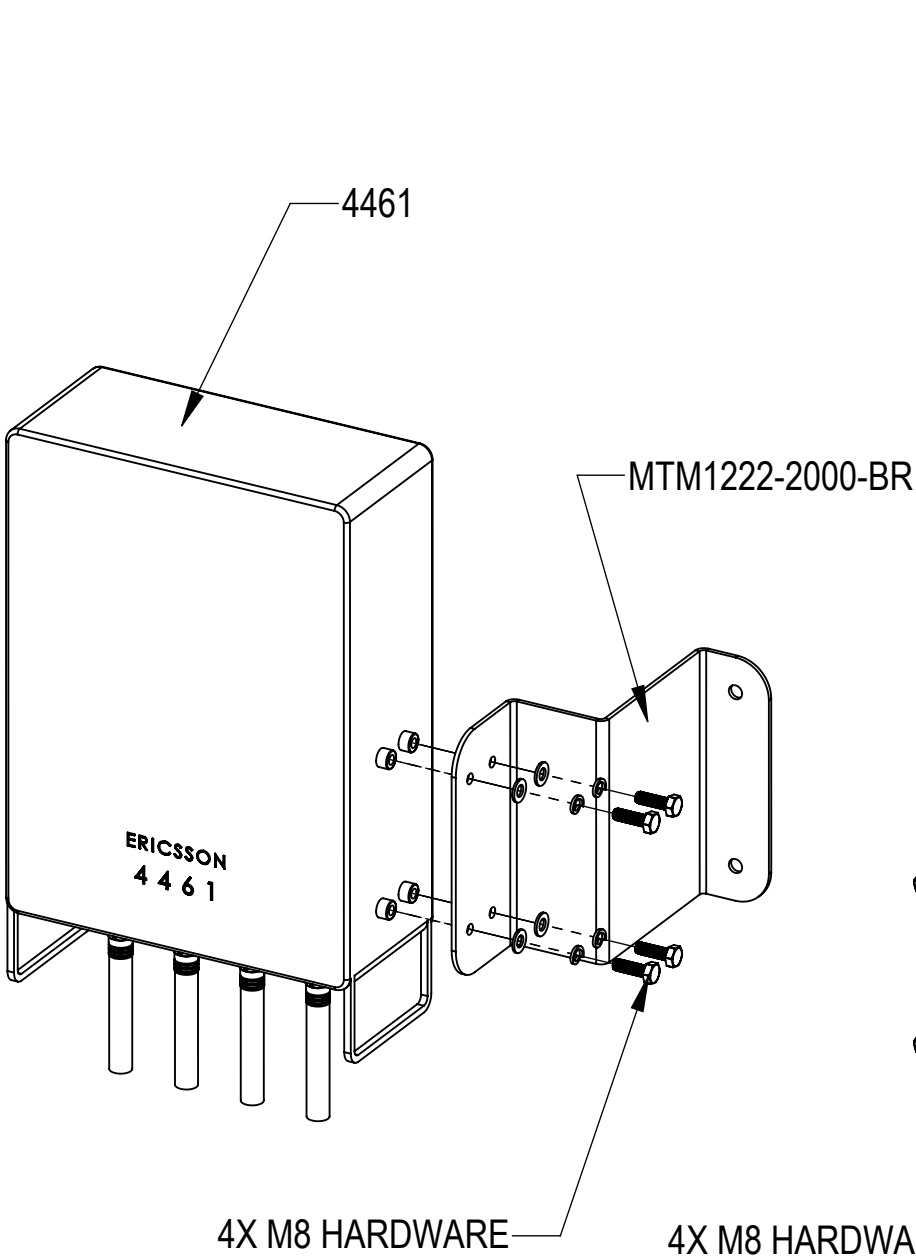
STEP 2

- A) UNINSTALL PRE-INSTALLED BRACKET MTM1222-1000-BR. RETAIN HARDWARE FOR INSTALLING WITH PSU IN STEP 3
- B) UNINSTALL PRE-INSTALLED BRACKET MTM1222-3000-BR. RETAIN HARDWARE FOR INSTALLING WITH PSU IN STEP 3

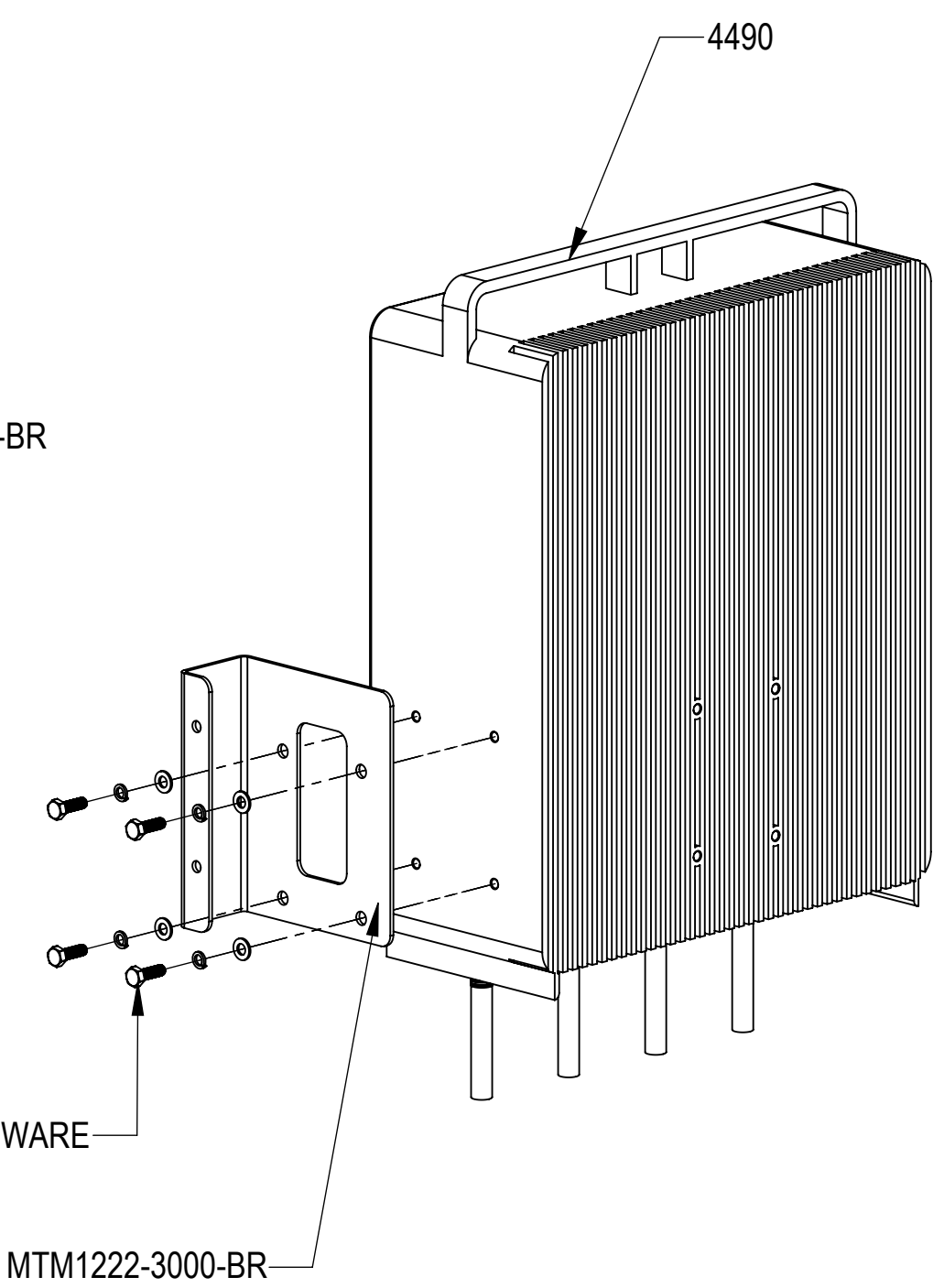
Installation Instructions



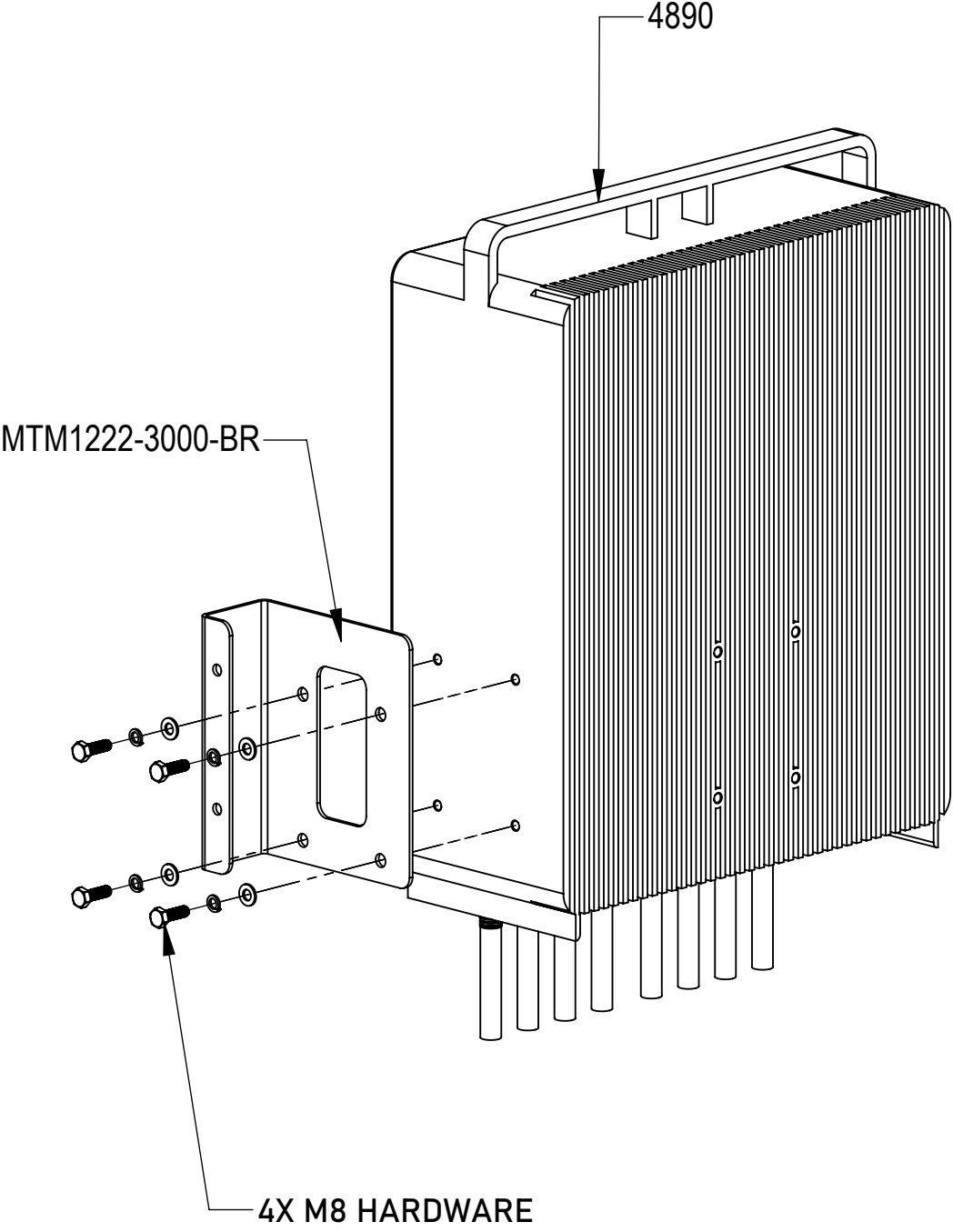
6308
INSTALL 6308 TO THE BRACKET MTM1222-1000-BR
USING 4 SETS OF M8 BOLTS, LOCK & FLAT WASHERS



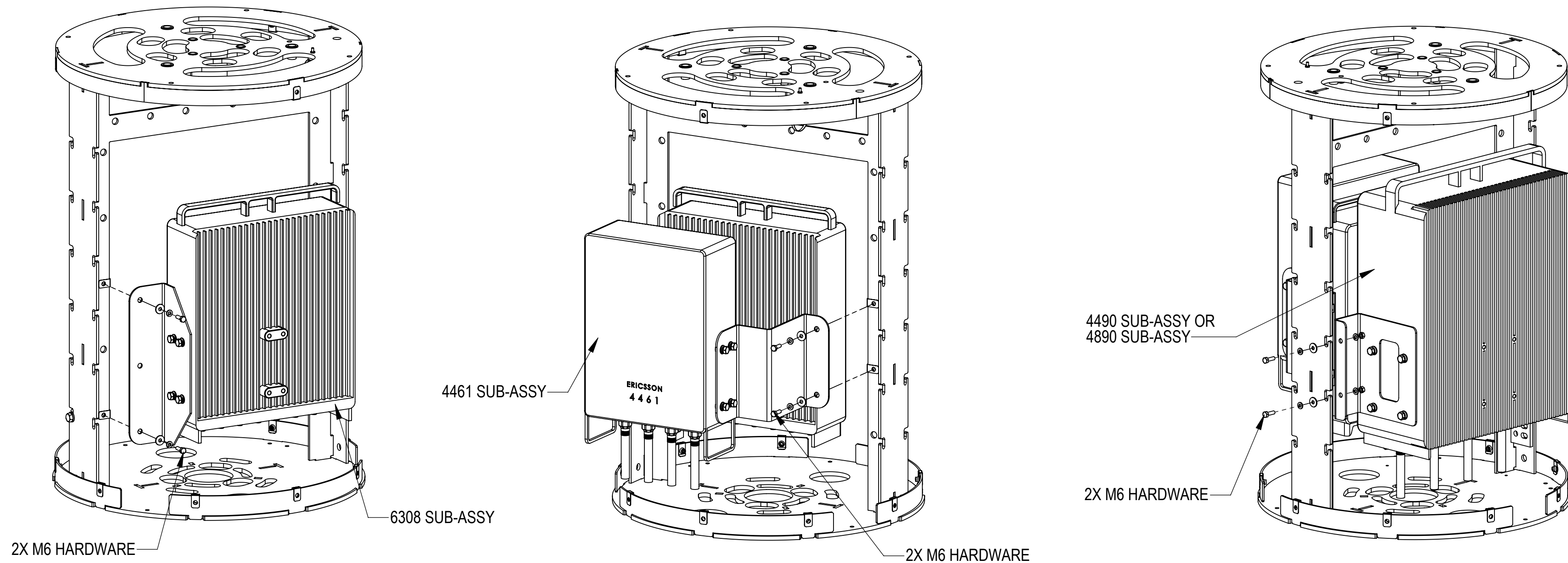
4461
INSTALL 4461 TO THE BRACKET MTM1222-2000-BR
USING 4 SETS OF M8 BOLTS, LOCK & FLAT WASHERS



4490
INSTALL 4490 TO THE BRACKET MTM1222-3000-BR
USING 4 SETS OF M8 BOLTS, LOCK & FLAT WASHERS

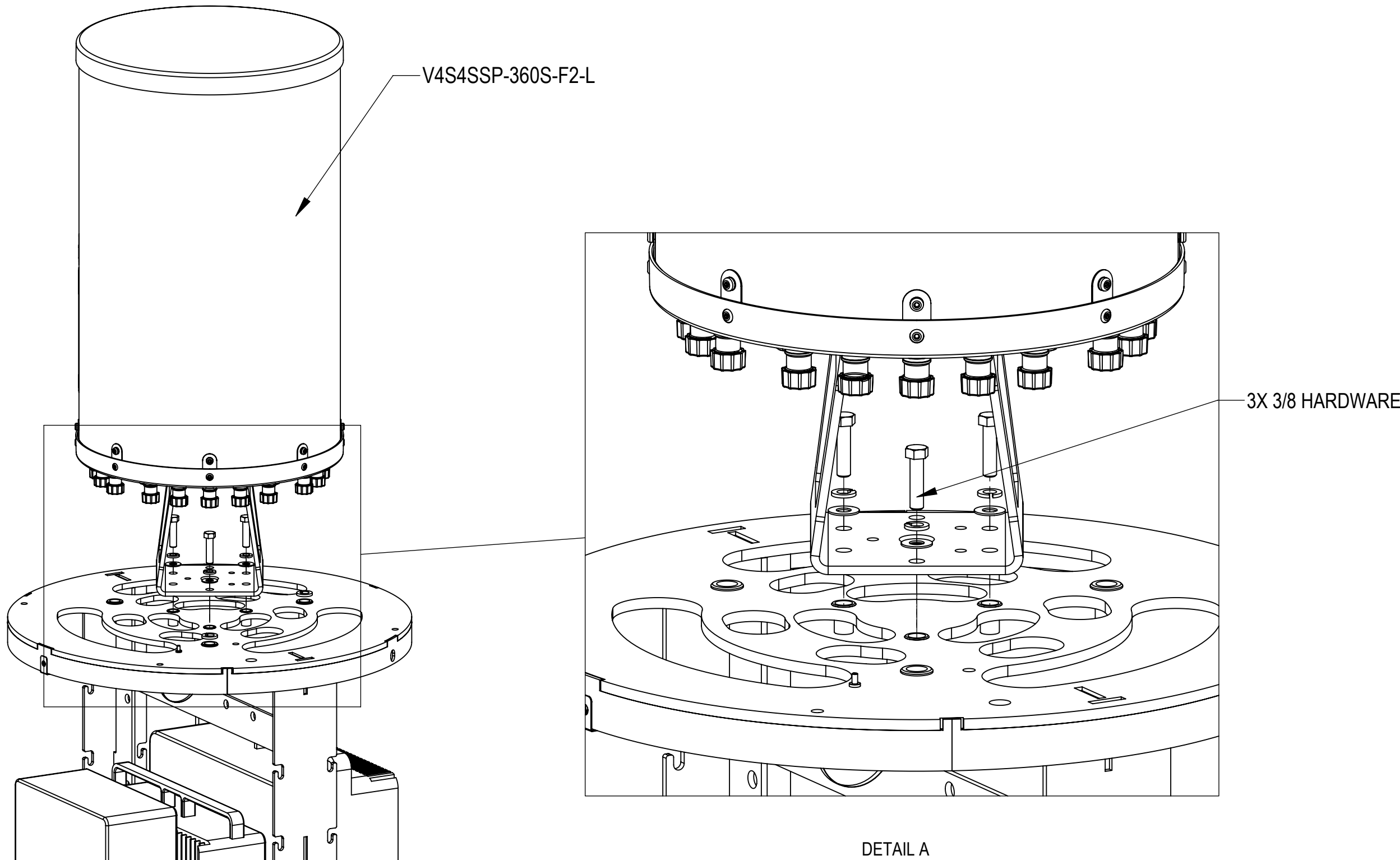


4890
INSTALL 4890 TO THE BRACKET MTM1222-3000-BR
USING 4 SETS OF M8 BOLTS, LOCK & FLAT WASHERS



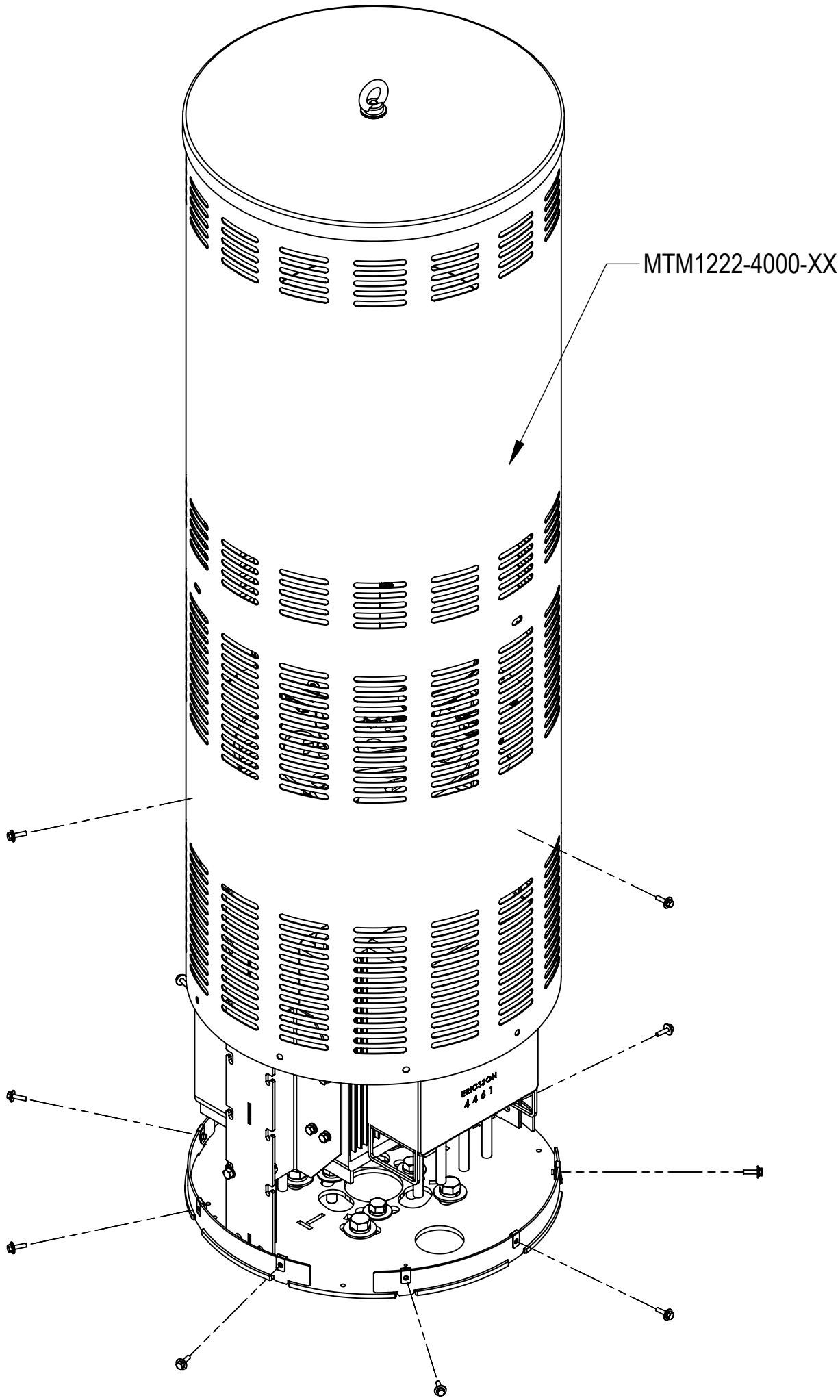
STEP 3

- INSTALL 6308 SUB-ASSY TO THE WELDMENT USING 2 SETS OF M6 SCREWS, LOCK & FLAT WASHERS, M6 CLIP NUTS CON THE LEFT OF THE WELDMENT AS SHOWN.
- INSTALL 4461 SUB-ASSY TO THE WELDMENT USING 2 SETS OF M6 SCREWS, LOCK & FLAT WASHERS, M6 CLIP NUTS ON THE RIGHT OF THE WELDMENT AS SHOWN.
- INSTALL 4490 SUB-ASSY OR 4890 SUB-ASSY TO THE WELDMENT USING 2 SETS OF M6 SCREWS, LOCK WASHERS, FLAT WASHERS & NUTS ON THE OPPOSITE SIDE AS SHOWN.



STEP 4

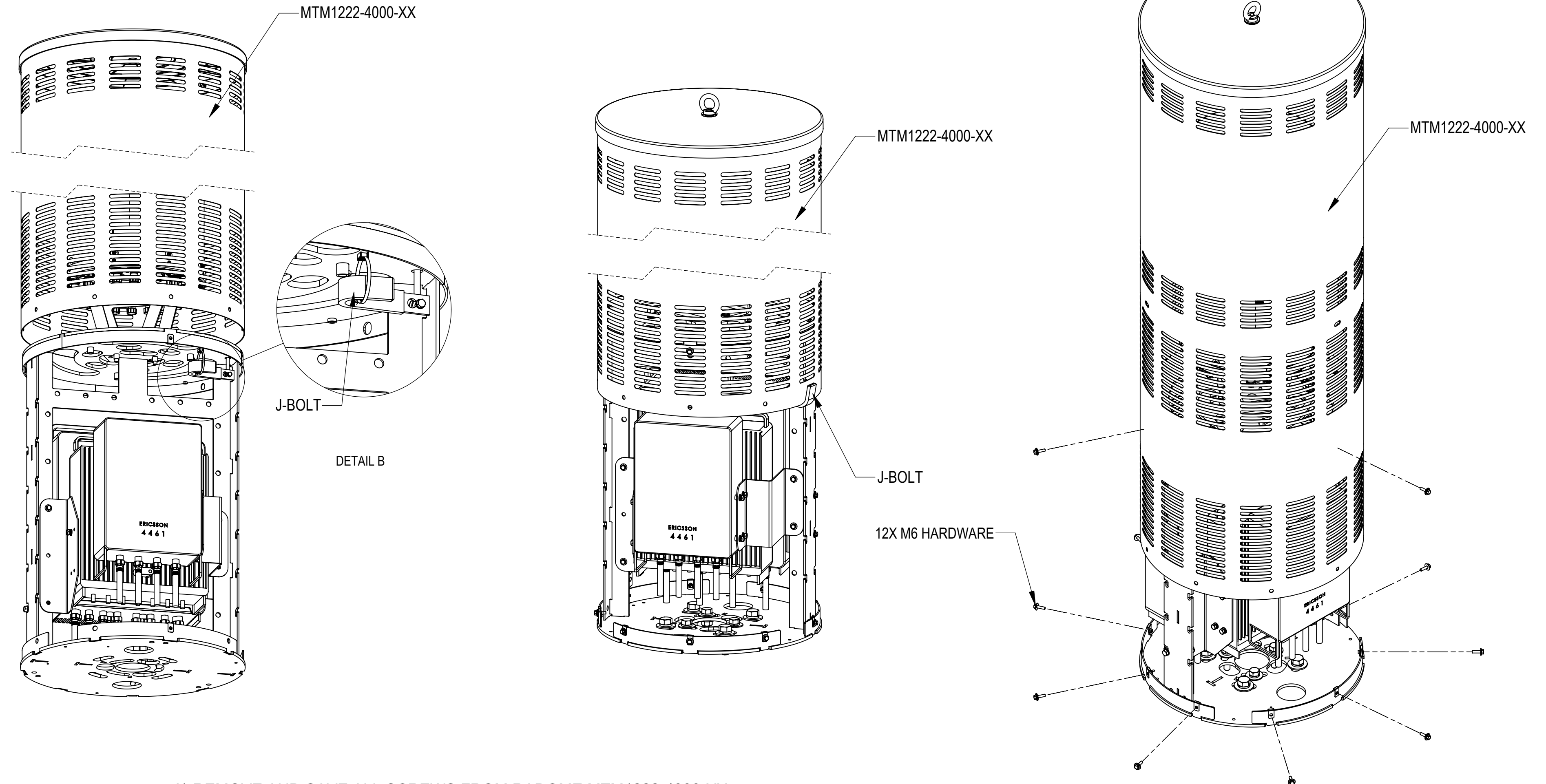
INSTALL ANTENNA V4S4SSP-360S-F2-L TO THE WELDMENT
USING 3X 3/8 BOLTS, LOCK & FLAT WASHERS



STEP 5

RE-INSTALL RADOME MTM1222-4000-XX

RRU MAINTENANCE



- REMOVE AND SAVE ALL SCREWS FROM RADOME MTM1222-4000-XX
- SLIDE THE RADOME MTM1222-4000-XX UP AND PUT DOWN THE J-BOLT
- PUT THE RADOME MTM1222-4000-XX ON THE J-BOLT TO SUPPORT THE WEIGHT OF THE RADOME WHEN MAINTAINING THE RRU
- SLIDE THE RADOME MTM1222-4000-XX UP AND STOW THE J-BOLT AS SHOWN IN DETAIL B WHEN MAINTENANCE COMPLETE
- INSTALL RADOME MTM1222-4000-XX USING 12X M6 SCREWS, LOCK AND FLAT WASHERS