

6V-10M-R6



12-port multibeam antenna, 12x 1695–2690 MHz, 6x 10–14° HPBW

General Specifications

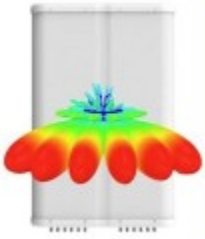
Antenna Type	Multibeam
Band	Single band
Color	Light Gray (RAL 7035)
Grounding Type	RF connector inner conductor and body grounded to reflector and mounting bracket
Performance Note	Outdoor usage
Radome Material	Fiberglass, UV resistant
Radiator Material	Low loss circuit board
Reflector Material	Aluminum
RF Connector Interface	4.3-10 Female
RF Connector Location	Bottom
RF Connector Quantity, mid band	12
RF Connector Quantity, total	12

Dimensions

Width	970 mm 38.189 in
Depth	235 mm 9.252 in
Length	900 mm 35.433 in
Net Weight, antenna only	43.8 kg 96.562 lb

Array Layout

6V-10M-R6



Array ID	Frequency (MHz)	RF Connector	RET ports	AISG No.	RET UID
Y1	1695-2690	1 - 2	1	AISG1	AHxxxxxxxxxxxxxxxxx1
Y2	1695-2690	3 - 4	2	AISG1	AHxxxxxxxxxxxxxxxxx2
Y3	1695-2690	5 - 6	3	AISG1	AHxxxxxxxxxxxxxxxxx3
Y4	1695-2690	7 - 8	4	AISG1	AHxxxxxxxxxxxxxxxxx4
Y5	1695-2690	9 - 10	5	AISG1	AHxxxxxxxxxxxxxxxxx5
Y6	1695-2690	11 - 12	6	AISG1	AHxxxxxxxxxxxxxxxxx6

Port Configuration



Electrical Specifications

Impedance	50 ohm
Operating Frequency Band	1695 – 2690 MHz
Polarization	±45°
Total Input Power, maximum	1,000 W

Electrical Specifications

	Y1-Y6	Y1-Y6	Y1-Y6	Y1-Y6	Y1-Y6
Frequency Band, MHz	1695–1880	1850–1990	1920–2180	2300–2500	2500–2690
RF Port	P1-P12	P1-P12	P1-P12	P1-P12	P1-P12
Gain, dBi	22	22.4	22.6	23.4	23.3

6V-10M-R6

Beam Centers, Horizontal, degrees	±8 ±24 ±40	±8 ±24 ±40	±8 ±24 ±40	±8 ±24 ±40	±8 ±24 ±40
Beam Crossover, dB	7	8	9	10	13
Beamwidth, Horizontal, degrees	12	11	11	9	9
Beamwidth, Vertical, degrees	11.9	11.2	10.5	9.1	8.4
Beam Tilt, degrees	4–10	4–10	4–10	4–10	4–10
USLS (First Lobe), dB	11	10	10	12	11
Isolation, Cross Polarization, dB	25	25	25	25	25
Isolation, Beam to Beam, dB	19	19	19	19	18
VSWR Return loss, dB	1.5 14.0	1.5 14.0	1.5 14.0	1.5 14.0	1.5 14.0
PIM, 3rd Order, 2 x 20 W, dBc	-153	-153	-153	-153	-153
Input Power per Port, maximum, watts	200	200	200	200	200

Mechanical Specifications

Wind Loading @ Velocity, frontal	1,116.0 N @ 150 km/h (250.9 lbf @ 150 km/h)
Wind Loading @ Velocity, lateral	341.0 N @ 150 km/h (76.7 lbf @ 150 km/h)
Wind Loading @ Velocity, rear	1,116.0 N @ 150 km/h (250.9 lbf @ 150 km/h)
Wind Speed, maximum	241 km/h (150 mph)

Packaging and Weights

Width, packed	1122 mm 44.173 in
Depth, packed	561 mm 22.087 in
Length, packed	1166 mm 45.906 in
Weight, gross	65.5 kg 144.403 lb

Regulatory Compliance/Certifications

Agency	Classification
UK-ROHS	Compliant

Included Products

BSAMNT-9	–	Wide Profile Antenna Downtilt Mounting Kit for 2.4 - 4.5 in (60 - 115 mm) OD round members. Kit contains one scissor top bracket set and one bottom bracket set.
----------	---	--

6V-10M-R6

* Footnotes

Performance Note Severe environmental conditions may degrade optimum performance



BSAMNT-9



Wide Profile Antenna Downtilt Mounting Kit for 2.4 - 4.5 in (60 - 115 mm) OD round members. Kit contains one scissor top bracket set and one bottom bracket set.

Product Classification

Product Type Downtilt mounting kit

General Specifications

Application Outdoor

Color Silver

Dimensions

Compatible Diameter, maximum 115 mm | 4.528 in

Compatible Diameter, minimum 60 mm | 2.362 in

Material Specifications

Material Type Galvanized steel

Packaging and Weights

Included Brackets | Hardware

Packaging quantity 1

Weight, gross 9.7 kg | 21.385 lb

Regulatory Compliance/Certifications

Agency	Classification
CE	Compliant with the relevant CE product directives
CHINA-ROHS	Below maximum concentration value
ISO 9001:2015	Designed, manufactured and/or distributed under this quality management system
REACH-SVHC	Compliant as per SVHC revision on www.andrew.com/ProductCompliance
ROHS	Compliant
UK-ROHS	Compliant



BSAMNT-9

