

6VV-10A-R6



24-port multibeam antenna, 24x 1695–2690 MHz, 6x 10-14° HPBW, 6x RET

- Provides 6 beams covering 1.695-2.69 GHz in 16 deg sectors
- Covers the entire mid-band, including bands 1,3,7,25,66,30,38,40,41
- Increases capacity density for maximum throughput
- Novel design produces stable beam peak positions at mid band
- Each beam supports 4x4 MIMO for high capacity at venues or special events
- 6 RETs available to control independently e-tilt for each beam to balance traffic between beams and optimize coverage

General Specifications

Antenna Type	Multibeam
Band	Single band
Color	Light Gray (RAL 7035)
Grounding Type	RF connector inner conductor and body grounded to reflector and mounting bracket
Performance Note	Outdoor usage
Radome Material	Fiberglass, UV resistant
Radiator Material	Low loss circuit board
Reflector Material	Aluminum
RF Connector Interface	4.3-10 Female
RF Connector Location	Bottom
RF Connector Quantity, mid band	24
RF Connector Quantity, total	24

Remote Electrical Tilt (RET) Information

RET Hardware	CommRET v2
RET Interface	8-pin DIN Female 8-pin DIN Male
RET Interface, quantity	1 female 1 male
Input Voltage	10–30 Vdc
Internal RET	Mid band (6)
Power Consumption, active state, maximum	10 W
Power Consumption, idle state, maximum	2 W

6VV-10A-R6

Protocol 3GPP/AISG 2.0 (Single RET)

Dimensions

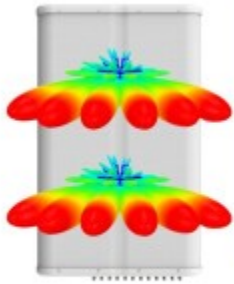
Width 970 mm | 38.189 in

Depth 235 mm | 9.252 in

Length 1600 mm | 62.992 in

Net Weight, without mounting kit 66.7 kg | 147.048 lb

Array Layout



Array ID	Frequency (MHz)	RF Connector	RET (dB)	AISG No.	RET UID
Y1	1695-2690	1 - 2	1	AISG1	A1XXXXXXXXXXXXY1
Y2	1695-2690	3 - 4			
Y3	1695-2690	5 - 6	2	AISG1	A1XXXXXXXXXXXXY2
Y4	1695-2690	7 - 8			
Y5	1695-2690	9 - 10	3	AISG1	A1XXXXXXXXXXXXY3
Y6	1695-2690	11 - 12			
Y7	1695-2690	13 - 14	4	AISG1	A1XXXXXXXXXXXXY4
Y8	1695-2690	15 - 16			
Y9	1695-2690	17 - 18	5	AISG1	A1XXXXXXXXXXXXY5
Y10	1695-2690	19 - 20			
Y11	1695-2690	21 - 22	6	AISG1	A1XXXXXXXXXXXXY6
Y12	1695-2690	23 - 24			

(Color of colored boxes are not true depictions of array color)

Port Configuration



Electrical Specifications

6VV-10A-R6

Impedance	50 ohm
Operating Frequency Band	1695 – 2690 MHz
Polarization	±45°
Total Input Power, maximum	2,000 W

Electrical Specifications

	Y1-Y12	Y1-Y12	Y1-Y12	Y1-Y12	Y1-Y12
Frequency Band, MHz	1695–1880	1850–1990	1920–2180	2300–2500	2500–2690
RF Port	1-24	1-24	1-24	1-24	1-24
Gain, dBi	21.9	22.4	23.1	23.8	23.4
Beam Centers, Horizontal, degrees	±8 ±24 ±40	±8 ±24 ±40	±8 ±24 ±40	±8 ±24 ±40	±8 ±24 ±40
Beam Crossover, dB	7	8	9	10	13
Beamwidth, Horizontal, degrees	12	11	10	9	9
Beamwidth, Vertical, degrees	11.9	11.2	10.5	9.1	8.4
Beam Tilt, degrees	4–10	4–10	4–10	4–10	4–10
USLS (First Lobe), dB	11	10	11	13	12
CPR at Boresight, dB	14	18	18	15	17
Isolation, Cross Polarization, dB	25	25	25	25	25
Isolation, Beam to Beam, dB	19	19	19	19	18
VSWR Return loss, dB	1.5 14.0	1.5 14.0	1.5 14.0	1.5 14.0	1.5 14.0
PIM, 3rd Order, 2 x 20 W, dBc	-153	-153	-153	-153	-153
Input Power per Port, maximum, watts	200	200	200	200	200

Mechanical Specifications

Wind Loading @ Velocity, frontal	1,983.0 N @ 150 km/h (445.8 lbf @ 150 km/h)
Wind Loading @ Velocity, lateral	606.0 N @ 150 km/h (136.2 lbf @ 150 km/h)
Wind Loading @ Velocity, rear	1,983.0 N @ 150 km/h (445.8 lbf @ 150 km/h)
Wind Speed, maximum	241 km/h (150 mph)

Packaging and Weights

Width, packed	1122 mm 44.173 in
----------------------	---------------------

6VV-10A-R6

Depth, packed	561 mm 22.087 in
Length, packed	1866 mm 73.465 in
Weight, gross	92 kg 202.825 lb

Regulatory Compliance/Certifications

Agency	Classification
UK-ROHS	Compliant

Included Products

BSAMNT-9	-	Wide Profile Antenna Downtilt Mounting Kit for 2.4 - 4.5 in (60 - 115 mm) OD round members. Kit contains one scissor top bracket set and one bottom bracket set.
----------	---	------------------------------------------------------------------------------------------------------------------------------------------------------------------

* Footnotes

Performance Note	Severe environmental conditions may degrade optimum performance
-------------------------	-----------------------------------------------------------------

BSAMNT-9



Wide Profile Antenna Downtilt Mounting Kit for 2.4 - 4.5 in (60 - 115 mm) OD round members. Kit contains one scissor top bracket set and one bottom bracket set.

Product Classification

Product Type Downtilt mounting kit

General Specifications

Application Outdoor

Color Silver

Dimensions

Compatible Diameter, maximum 115 mm | 4.528 in

Compatible Diameter, minimum 60 mm | 2.362 in

Material Specifications

Material Type Galvanized steel

Packaging and Weights

Included Brackets | Hardware

Packaging quantity 1

Weight, gross 9.7 kg | 21.385 lb

Regulatory Compliance/Certifications

Agency	Classification
CE	Compliant with the relevant CE product directives
CHINA-ROHS	Below maximum concentration value
ISO 9001:2015	Designed, manufactured and/or distributed under this quality management system
REACH-SVHC	Compliant as per SVHC revision on www.andrew.com/ProductCompliance
ROHS	Compliant
UK-ROHS	Compliant



BSAMNT-9

