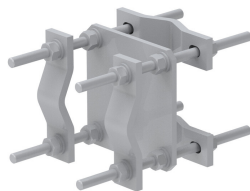


# CO-200



Crossover Plate, joins 1.5 in to 5 in OD round members (Pipe not included)

## Product Classification

**Product Type**                      Clamp plate

## General Specifications

**Mounting**                              Crossover plate

**Tower Taper**                        Non-tapered

## Dimensions

**Height**                                254 mm   |   10 in

**Width**                                 304.8 mm   |   12 in

**Length**                                203.2 mm   |   8 in

**Mounting Diameter, maximum**    127 mm   |   5 in

**Mounting Diameter, minimum**    38.1 mm   |   1.5 in

## Material Specifications

**Material Type**                        Hot dip galvanized steel

## Packaging and Weights

**Included**                                Clamps   |   Plates

**Packaging quantity**                1

**Weight, net**                            9.8 kg   |   21.605 lb

## Regulatory Compliance/Certifications

Agency	Classification
ISO 9001:2015	Designed, manufactured and/or distributed under this quality management system