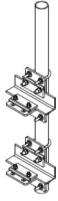


RRU-AM-2

RRU-AM-2
IN USE ATTACHED TO ANGLE MEMBERS



RRU Angle Mount Kit for Angle Sector Frame Members (mounts 2.88in OD pipes to front of 90 degree angles 2in to 3in - Pipe not incl)

OBSOLETE

This product was discontinued on: February 22, 2019

Replaced By:

PAM

Universal Pipe-to-Angle Mount Kit for mounting 2.5in to 3.5in OD pipe to 90 degree angles 2.5in to 4in. HW incl for 2-3/8in pipe. (Pipe not incl)

Product Classification

Product Type Mounting kit

General Specifications

Mounting Angle Members 50.8 –76.2 mm (2 in to 3 in)

Pipe, quantity 0

Dimensions

Height 292.1 mm | 11.5 in

Width 152.4 mm | 6 in

Length 162.56 mm | 6.4 in

Mounting Diameter, maximum 76.2 mm | 3 in

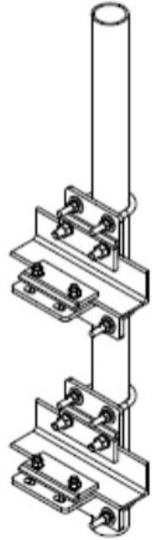
Mounting Diameter, minimum 50.8 mm | 2 in

Pipe Outer Diameter 73.66 mm | 2.9 in

Outline Drawing

RRU-AM-2

RRU-AM-2 IN USE ATTACHED TO ANGLE MEMBERS



Material Specifications

Material Type Hot dip galvanized steel

Packaging and Weights

Included Angle brackets | Attachment hardware

Packaging quantity 2

Weight, net 15.8 kg | 34.833 lb

Regulatory Compliance/Certifications

Agency	Classification
ISO 9001:2015	Designed, manufactured and/or distributed under this quality management system