

# AEKT-430-N1



## Antenna Enclosure Kit

- Innovative flexible modular solution enabling suitable sites to be upgraded to 5G capability
- Compatible with a variety of Nokia n78 mMIMO Active Antennas (MAA)
- The module installs directly above an existing, suitable passive antenna to provide the appearance of a single integrated antenna unit – potentially simplifying site zoning approvals
- Installed antenna units can be swapped out on site - e.g. to perform capacity upgrades
- Compatible specifically with antennas featuring ANDREW’s 430 x 197 mm (WxD) radome housing
- Can be deployed as a standalone solution
- Includes Antenna Enclosure Housing, Installation Kit for compatible Nokia mMIMO Active Antennas (MAA), AEKT-430-N1 Mounting Hardware, protective “Windshield” Panels and Top Cap
- A Mounting Kit for the antenna installed below the AEKT-430-N1 unit should be ordered separately, ANDREW P/N: BSAMNT-AEKT (required when installing the AEKT-430-N1 module directly on top of an antenna)
- Contact your ANDREW representative for further details. For a list of supported Nokia MAA products, please contact Nokia

## General Specifications

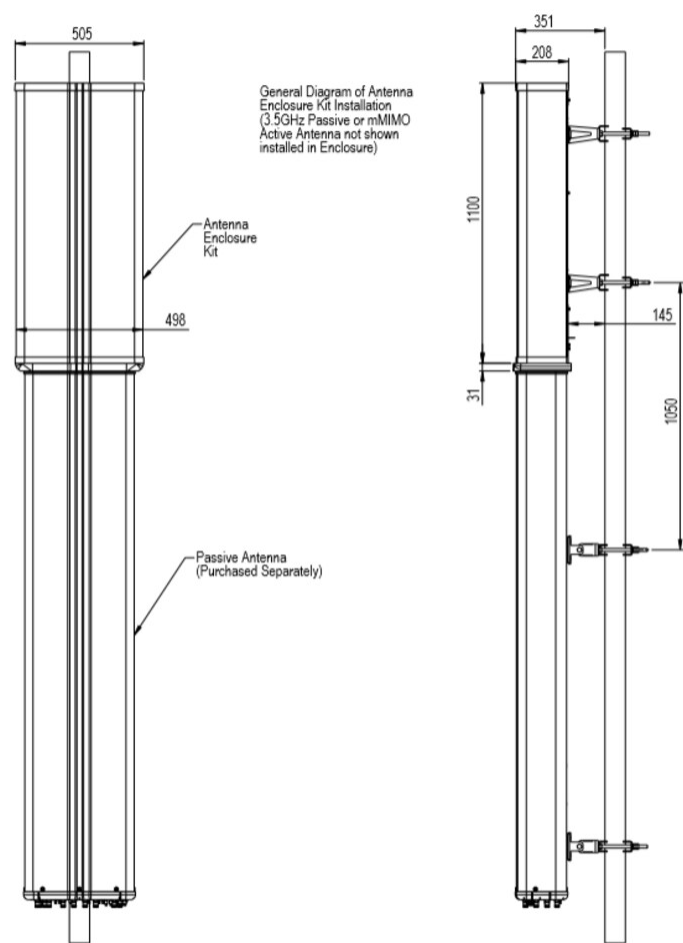
Antenna Type	Antenna enclosure kit
Color	Light Gray (RAL 7035)
Performance Note	Outdoor usage
Radome Material	Fiberglass, UV resistant

## Dimensions

Width	498 mm   19.606 in
Depth	199 mm   7.835 in
Length	1100 mm   43.307 in
Net Weight, without mounting kit	9.29 kg   20.481 lb

## Application Drawing

# AEKT-430-N1



## Mechanical Specifications

Wind Loading @ Velocity, frontal	700.0 N @ 150 km/h (157.4 lbf @ 150 km/h)
Wind Loading @ Velocity, lateral	308.0 N @ 150 km/h (69.2 lbf @ 150 km/h)
Wind Loading @ Velocity, maximum	1,385.0 N @ 150 km/h (311.4 lbf @ 150 km/h)
Wind Loading @ Velocity, rear	700.0 N @ 150 km/h (157.4 lbf @ 150 km/h)
Wind Speed, maximum	241 km/h (150 mph)

## Packaging and Weights

Width, packed	620 mm   24.409 in
Depth, packed	350 mm   13.78 in
Length, packed	1430 mm   56.299 in

# AEKT-430-N1

---

Weight, gross	26.49 kg   58.4 lb
Weight, net	20.2 kg   44.533 lb

## Regulatory Compliance/Certifications

Agency	Classification
CE	Compliant with the relevant CE product directives
ISO 9001:2015	Designed, manufactured and/or distributed under this quality management system

CE

### \* Footnotes

Performance Note	Severe environmental conditions may degrade optimum performance
------------------	---