

1.0 GENERAL NOTES

- 1.1 ALL METRIC DIMENSIONS ARE IN BRACKETS [X.X]
- 1.2 FOR PATENT INFO: <https://www.cs-pat.com>

2.0 DESIGN NOTES

3.0 MANUFACTURING/SPECIAL REQUIREMENTS

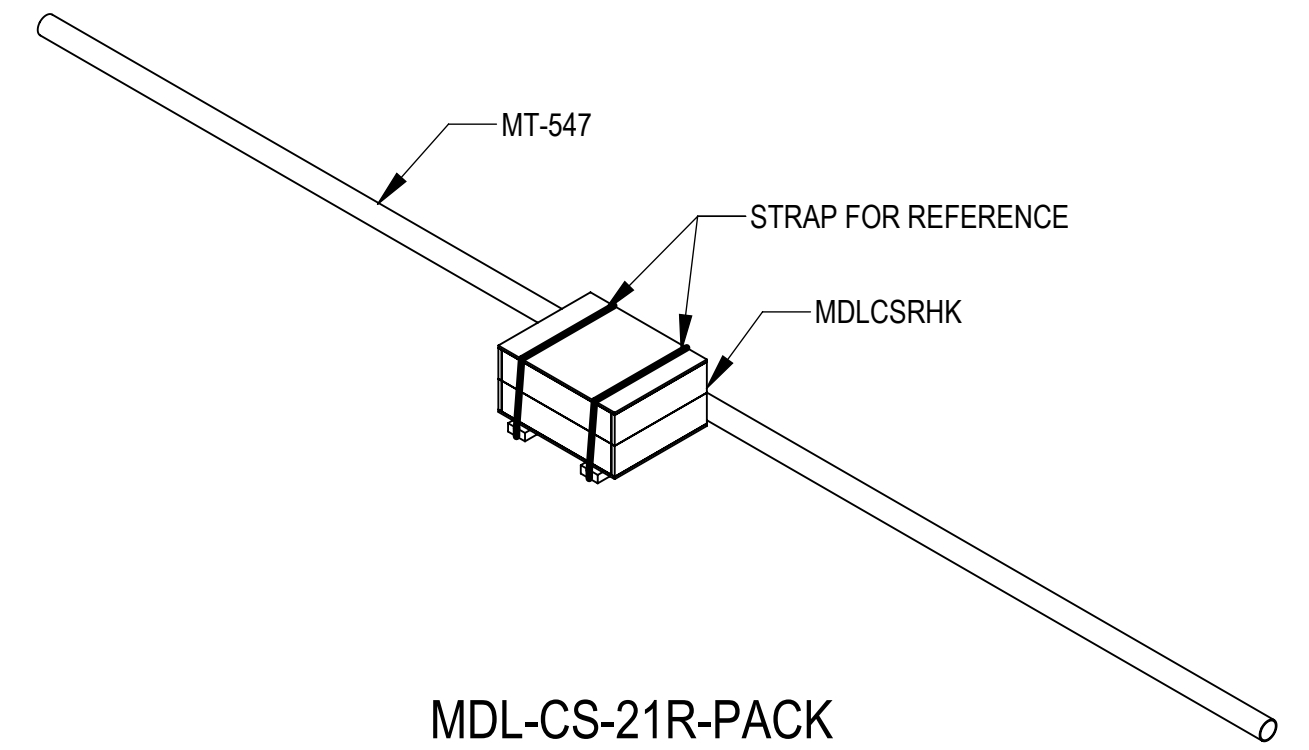
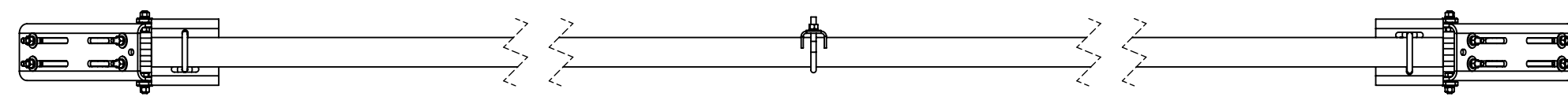
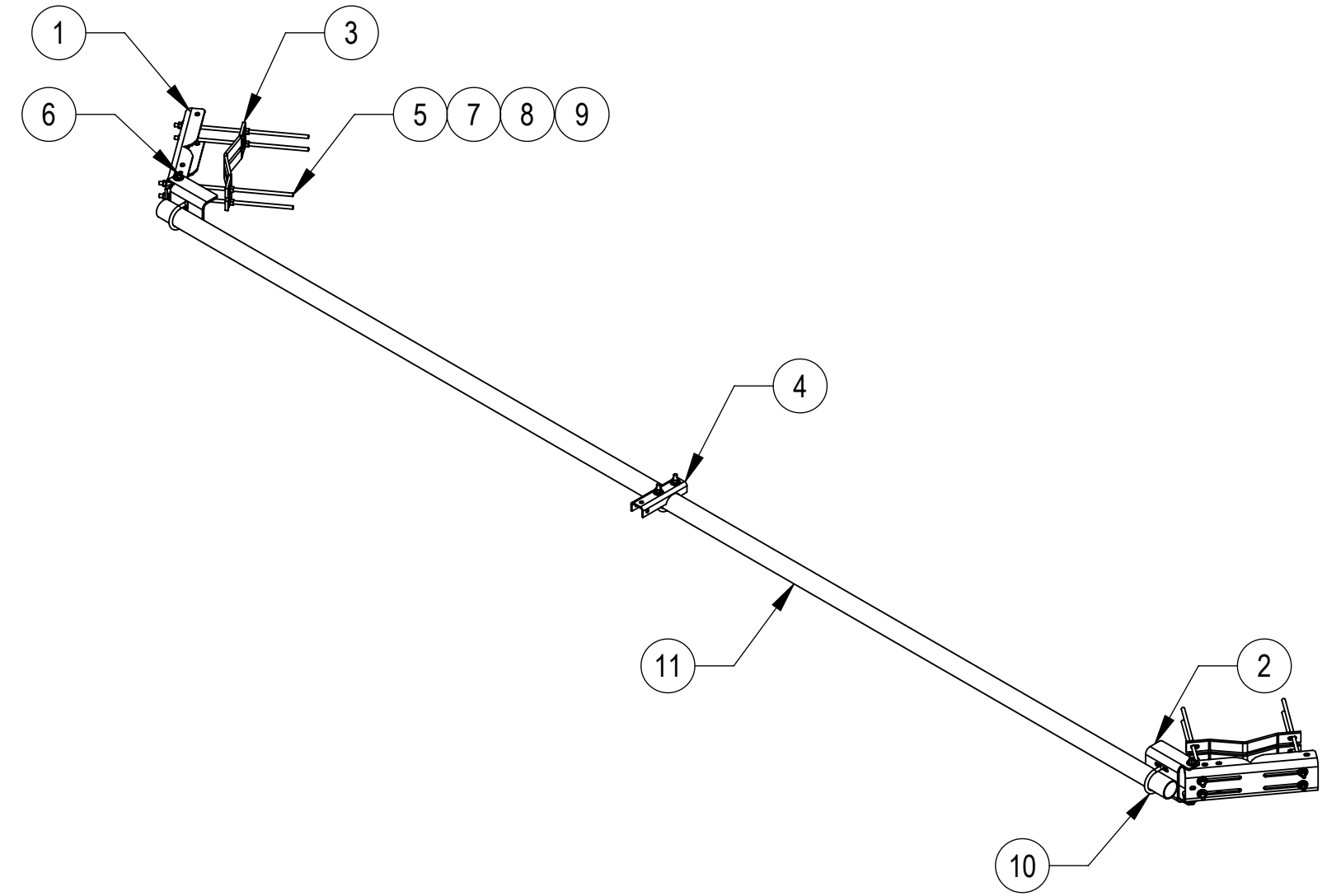
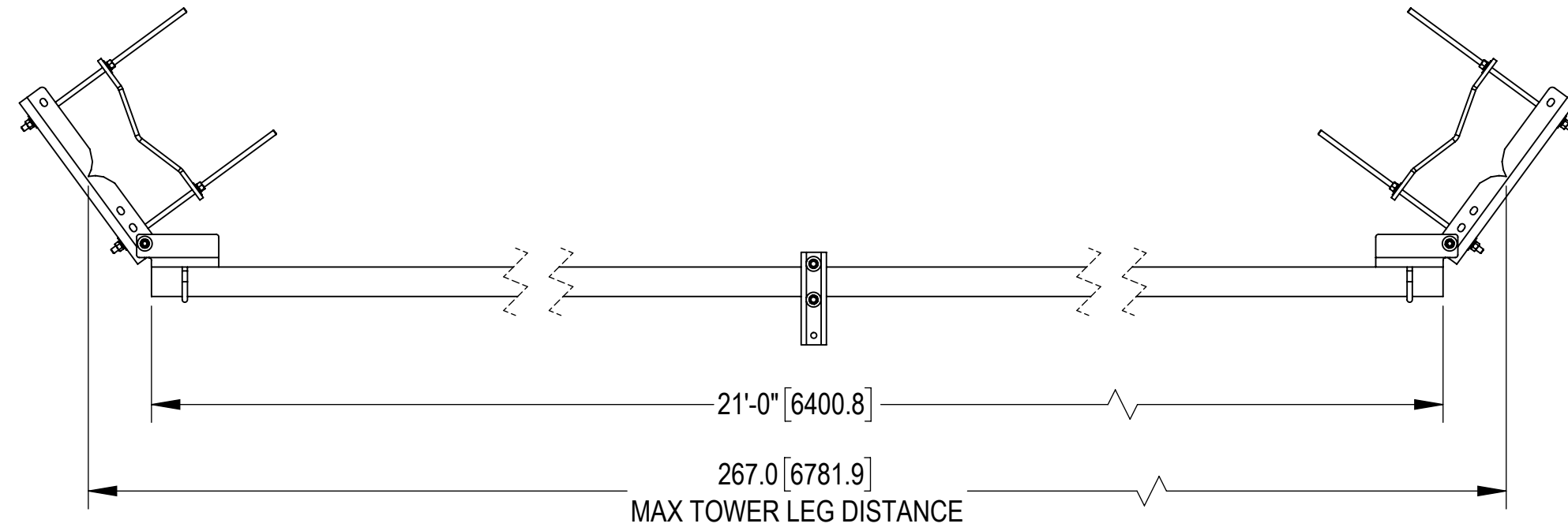
- 3.1 TIGHTEN ALL BOLTS SECURING FLAT PLATES BY THE TURN-OF-NUT METHOD. TIGHTEN ALL U-BOLTS USING TURN-OF-NUT METHOD WITH ATTENTION TO LEAVE EQUAL DISTANCE AND EQUAL FORCE ON EACH LEG OF THE U-BOLT.

4.0 TEST

5.0 PACKAGING

- 5.1 PACKAGING SHALL MEET COMMSCOPE REQUIREMENTS PER DOCUMENT IS-PL-3005
- 5.2 PRINTED DOCUMENT TO BE PLACED INSIDE POLYBAG AND THEN IN SHIPPING CONTAINER
- 5.3 EXTRA HARDWARE MAYBE SUPPLIED, BAGGED AND SHIPPED

| REVISIONS | | | |
|-----------|-----------------|-------------------|-----------------------|
| REV. | DESCRIPTION | DATE | APPROVED |
| A | INITIAL RELEASE | LS1146 06SEP23 | YZ1080 40178694CMO |



COMPONENT PART NUMBERS PROVIDED FOR ASSEMBLY PURPOSES;
INDIVIDUAL COMPONENTS MAY BE SHIPPED AS PARTS WITHIN AN INCLUDED KIT.

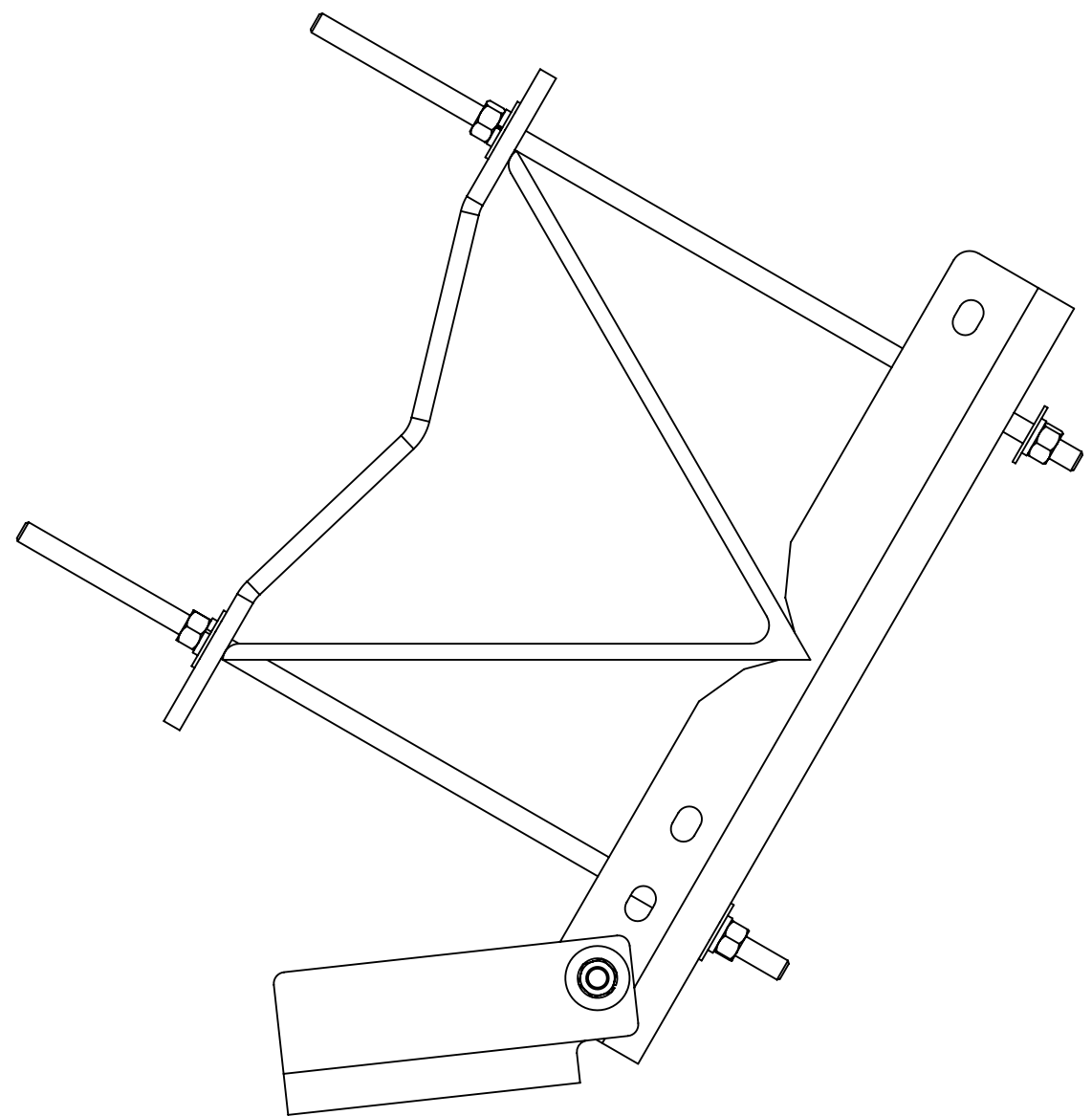
| ITEM | PART NO. | DESCRIPTION | QTY. | WEIGHT | NOTE NO. |
|------|-----------|---------------------------------|------|------------|----------|
| 1 | MDLCS01 | LARGE UNIVERSAL LEG CHANNEL | 2 | 27.16 LBS | |
| 2 | MTC987202 | CHANNEL PIVOT BRACKET | 2 | 12.43 LBS | |
| 3 | MDLCS02 | MDLCS HALF CLAMP 6" - 12" 90DEG | 4 | 5.71 LBS | |
| 4 | TFMSS35 | STIFFARM STRUT SUPPORT 3.5"OD | 1 | 4.05 LBS | |
| 5 | MT-382-24 | 5/8" X 24" THREADED ROD | 8 | 1.93 LBS | |
| 6 | GB-05205 | 5/8" X 2" GALV BOLT KIT | 4 | 0.26 LBS | |
| 7 | GWF-05 | 5/8" GALV FLAT WASHER, 1.7OD | 32 | 0.06 LBS | |
| 8 | GWL-05 | 5/8" GALV LOCK WASHER | 16 | 0.03 LBS | |
| 9 | GN-05 | 5/8" GALV HEX NUT | 24 | 0.08 LBS | |
| 10 | GUB-53560 | 5/8" X 3-5/8" X 6" GALV U-BOLT | 3 | 1.30 LBS | |
| 11 | MT-547 | 3.5" O.D. X 21' PIPE | 1 | 127.42 LBS | |

COMMSCOPE, INC. OF NORTH CAROLINA

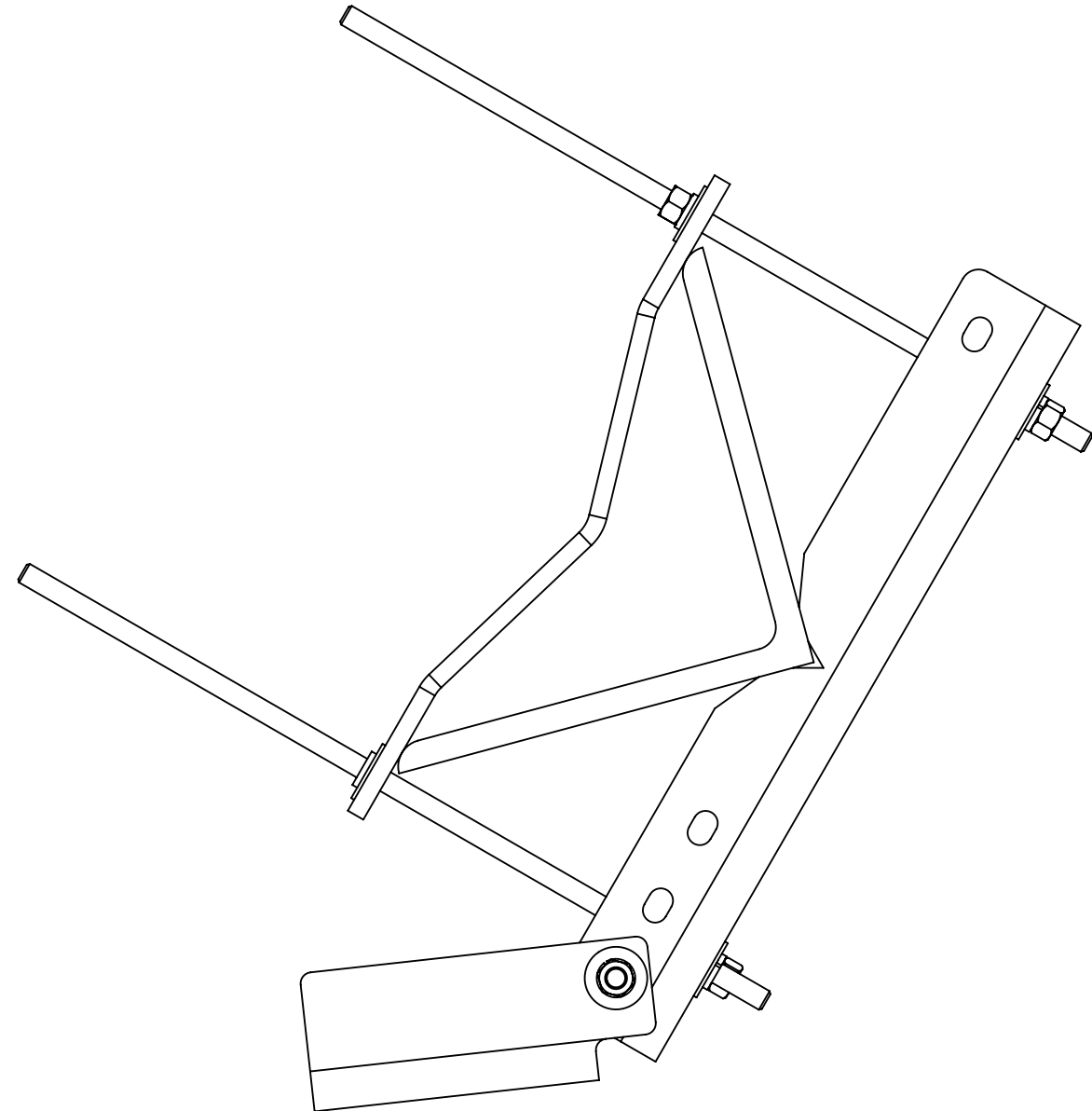
| TOLERANCES | | SAP MATERIAL MASTER | |
|---|------------------------------|-------------------------|------------|
| 1 PLACE .X[X] ± 0.2[6.3] | 3 PLACE .XXX[X] ± 0.060[1.5] | MDL-CS-21R | |
| 2 PLACE .XX[X] ± 0.12[3.0] | ANGLES ± 2° | | |
| FINISH | | MATERIAL | |
| UNLESS OTHERWISE SPECIFIED DIMENSIONS ARE IN INCHES INTERPRET PER ANSI Y 14.5M-1994 | | TITLE | |
| CE | LS1146 | DATE | 06SEP23 |
| RW | LS1146 | DATE | 09/25/2023 |
| AD | YZ1080 | DATE | 09/26/2023 |
| RE | YMENG | DATE | 09/26/2023 |
| ECN 40178694CMO | | SCALE | |
| | | 1:32 | |
| | | DOCUMENT NO. | |
| | | MDL-CS-21R | |
| SIZE | | MODEL | |
| Auth Group INSL | | VERSION STATUS REVISION | |
| C | | 00 IW A | |
| | | DRAWING | |
| | | VERSION STATUS REVISION | |
| | | 00 RE A | |
| | | SHEET | |
| | | 1 OF 2 | |

| | | |
|--------------|----------------|---------------------|
| DENSITY | | lbs/in ³ |
| MASS | 259.44 | lbs |
| VOLUME | 915.34 | in ³ |
| SURFACE AREA | 8346.85 | in ² |
| HEIGHT | 9.82[249.4] | |
| LENGTH | 41.14[1045.0] | |
| WIDTH | 285.73[7257.5] | |

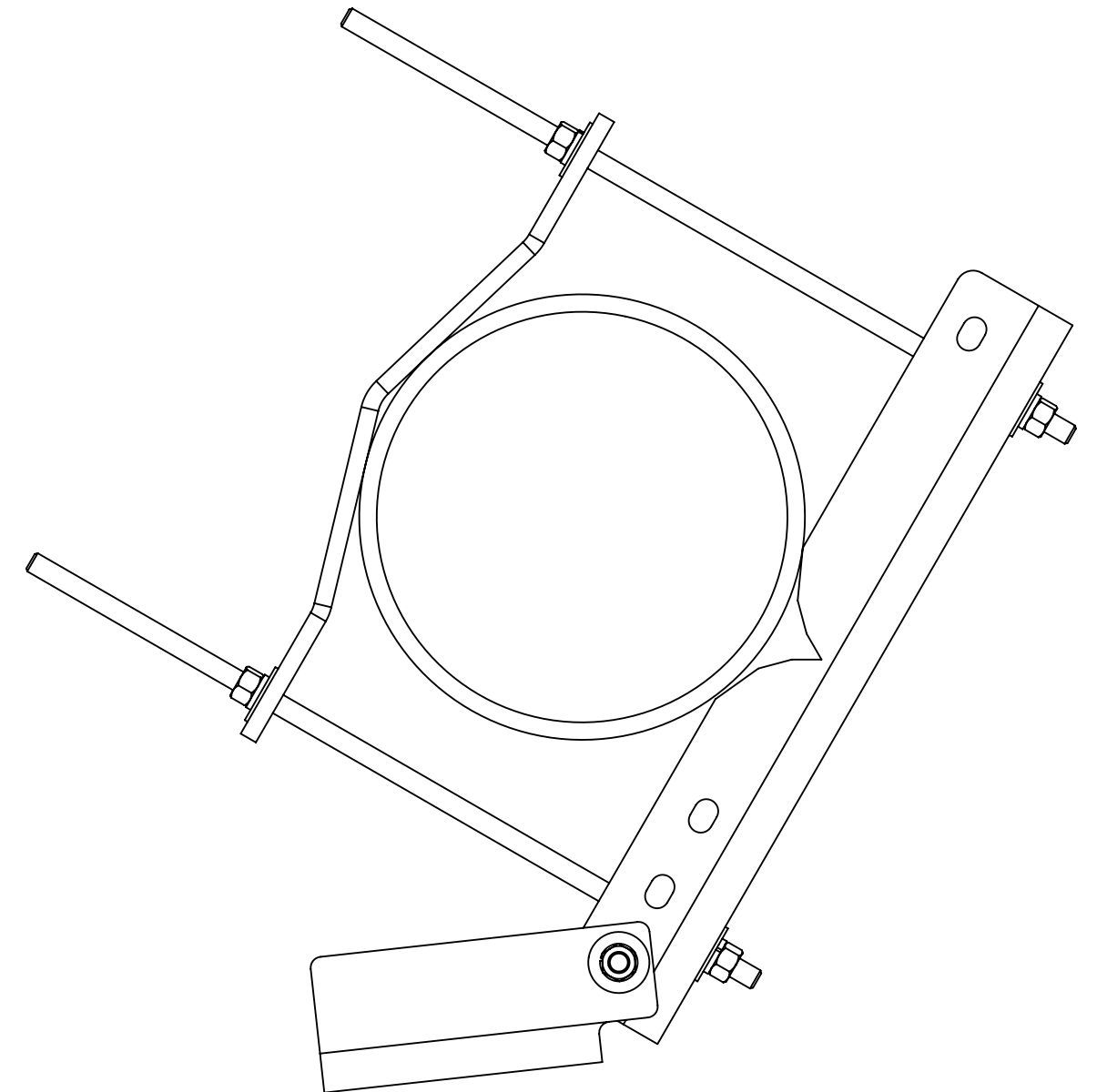
OPTIONAL MOUNTING




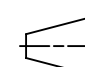
60 ° TOWER LEGS UP TO 16" X 16" ANGLE



90 ° TOWER LEGS UP TO 12" X 12" ANGLE



ROUND TOWER LEGS UP TO \varnothing 16" OD

| | | | | |
|---|----------------------|-----------------------------------|--------------|-----------------|
| COMMSCOPE, INC. OF NORTH CAROLINA | | | | |
| TITLE CHANNEL SUPPORT, 21 FT, L BRKT, MW DISH | | | | |
| SIZE C | SCALE 1:32 | DOCUMENT NO. MDL-CS-21R | | |
|   | | DRAWING | | SHEET 2 OF 2 |
| | | VERSION 00 | STATUS RE | |